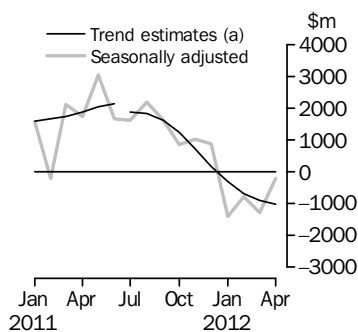


# INTERNATIONAL TRADE IN GOODS AND SERVICES

AUSTRALIA

EMBARGO: 11.30AM (CANBERRA TIME) FRI 8 JUN 2012

## Balance on Goods and Services



(a) Trend breaks of \$300m have been applied to both January 2011 and July 2011.

## KEY FIGURES

|  | Feb<br>2012 | Mar<br>2012 | Apr<br>2012 | Mar<br>12 to<br>Apr 12<br>% |
|--|-------------|-------------|-------------|-----------------------------|
|  | \$m         | \$m         | \$m         |                             |
| <b>BALANCE ON GOODS AND SERVICES</b>             |             |             |             |                             |
| Trend estimates                                  | -675        | -913        | -1 025      | ..                          |
| Seasonally adjusted                              | -776        | -1 282      | -203        | ..                          |
| <b>CREDITS (Exports of goods &amp; services)</b> |             |             |             |                             |
| Trend estimates                                  | 25 394      | 25 213      | 25 119      | —                           |
| Seasonally adjusted                              | 24 426      | 25 244      | 26 082      | 3                           |
| <b>DEBITS (Imports of goods &amp; services)</b>  |             |             |             |                             |
| Trend estimates                                  | 26 069      | 26 126      | 26 144      | —                           |
| Seasonally adjusted                              | 25 202      | 26 526      | 26 285      | -1                          |

.. not applicable

— nil or rounded to zero (including null cells)

## KEY POINTS

### BALANCE ON GOODS AND SERVICES

- In trend terms, the *balance on goods and services* was a deficit of \$1,025m in April 2012, a rise of \$112m on the deficit in March 2012.
- In seasonally adjusted terms, the *balance on goods and services* was a deficit of \$203m in April 2012, a fall of \$1,079m on the deficit in March 2012.

### CREDITS (EXPORTS OF GOODS & SERVICES)

- In seasonally adjusted terms, *goods and services credits* rose \$838m (3%) to \$26,082m. *Non-rural goods* rose \$746m (4%) and *rural goods* rose \$86m (3%). *Non-monetary gold* fell \$24m (2%). *Net exports of goods under merchanting* remained steady at \$30m. *Services credits* rose \$30m (1%).

### DEBITS (IMPORTS OF GOODS & SERVICES)

- In seasonally adjusted terms, *goods and services debits* fell \$241m (1%) to \$26,285m. *Intermediate and other merchandise goods* fell \$465m (5%) and *non-monetary gold* fell \$43m (10%). *Capital goods* rose \$103m (2%) and *consumption goods* rose \$75m (1%). *Services debits* rose \$89m (2%).

## INQUIRIES

For further information contact Selvi Sekhar on Canberra (02) 6252 5540 for Goods, and Lee Taylor on Canberra (02) 6252 6377 for Services.

# NOTES

## FORTHCOMING ISSUES

| ISSUE          | RELEASE DATE     |
|----------------|------------------|
| May 2012       | 5 July 2012      |
| June 2012      | 2 August 2012    |
| July 2012      | 7 September 2012 |
| August 2012    | 3 October 2012   |
| September 2012 | 5 November 2012  |
| October 2012   | 6 December 2012  |

.....

## REVISIONS

Revisions have been made to incorporate the latest data relating to international merchandise trade and information on capital goods that have changed ownership but have not yet crossed the customs frontier:

- on a recorded trade basis, international merchandise exports and imports have been revised back to October 2011
- on a balance of payments basis, the goods debits, 'capital goods' component has been revised back to July 2010. No other components in the balance of payments series have been revised. The revised goods debits data aligns with the data published in the March quarter 2012 issues of *Balance of Payments and International Investment Position, Australia* (cat. no. 5302.0) and *Australian National Accounts: National Income, Expenditure and Product* (cat. no. 5206.0).

Table 17 summarises revisions to goods and services on a balance of payments basis, in original current price terms, since the last issue of this publication. In original terms, the revisions have:

- increased the surplus on goods and services for 2010–11 by \$76m
- decreased the surplus on goods and services for the nine months to March 2012 by \$878m.

## CHANGES IN THIS ISSUE

An improvement to the seasonal adjustment methodology of the current price value of the 'coal, coke and briquettes' component has been introduced from July 2005 onwards. Previously the 'coal, coke and briquettes' component had only a length-of-month adjustment applied, which is maintained up to June 2005. This change in methodology will be closely monitored as part of our ongoing improvement program.

## VALUE ADJUSTMENTS

Adjustments have been made to the value of the 'metal ores and minerals', 'coal, coke and briquettes' and 'capital goods n.e.s.' components in the balance of payments series.

See page 4 – *Commodity value adjustment* for details.

## RELATED RELEASES

See page 5 – *Related releases* for details.

Brian Pink  
Australian Statistician

## CONTENTS

|                                      | <i>page</i> |
|--------------------------------------|-------------|
| Commodity value adjustment . . . . . | 4           |
| Related releases . . . . .           | 5           |
| Time series data . . . . .           | 6           |

### ANALYSIS

|                                 |   |
|---------------------------------|---|
| Analysis and comments . . . . . | 8 |
|---------------------------------|---|

### TABLES

#### INTERNATIONAL TRADE IN GOODS AND SERVICES – BALANCE OF PAYMENTS BASIS

|   |    |
|---|----|
| <b>1</b> Goods and services, summary, seasonally adjusted and trend estimates . . . . . | 16 |
| <b>2</b> Goods and services, summary, original . . . . .                                | 17 |
| <b>3</b> Goods credits, original . . . . .  | 18 |
| <b>4</b> Goods debits, original . . . . .   | 19 |
| <b>5</b> Goods credits, seasonally adjusted . . . . .                                   | 20 |
| <b>6</b> Goods debits, seasonally adjusted . . . . .                                    | 21 |
| <b>7</b> Goods credits, trend estimates . . . . .                                       | 22 |
| <b>8</b> Goods debits, trend estimates . . . . .  | 23 |
| <b>9</b> Services, summary, original . . . . .  | 24 |
| <b>10</b> Services, summary, seasonally adjusted and trend estimates . . . . .          | 25 |
| <b>11</b> Services, original, quarterly . . . . .                                       | 26 |

#### INTERNATIONAL MERCHANDISE TRADE – RECORDED TRADE BASIS

|  |    |
|--|----|
| <b>12</b> International merchandise exports, by commodity . . . . .                | 27 |
| <b>13</b> International merchandise imports, by commodity . . . . .                | 30 |
| <b>14</b> International merchandise trade, by country and country groups . . . . . | 33 |
| <b>15</b> International merchandise trade, by state . . . . .                      | 34 |

#### OTHER TABLES

|   |    |
|---|----|
| <b>16</b> Period average exchange rates per Australian dollar . . . . . | 35 |
| <b>17</b> Summary of revisions, goods and services, original . . . . .  | 36 |

### OTHER INFORMATION

|                                       |    |
|---------------------------------------|----|
| Explanatory notes . . . . .           | 37 |
| Appendix – Related articles . . . . . | 43 |

## COMMODITY VALUE ADJUSTMENT

### VALUE ADJUSTMENTS

International merchandise trade exports data (on a recorded trade basis) presented in tables 12–15 of this publication are based on information provided by exporters to the *Australian Customs and Border Protection Service* (Customs and Border Protection). At the time of initial reporting to Customs and Border Protection estimated quantity and unit price information may be reported for commodities such as iron ore and coal. Final quantity and unit price information are updated progressively in recorded trade data as exporters revise the information provided to Customs and Border Protection. When additional information on quantity and unit price for these commodities are available, the ABS may adjust the balance of payments series to minimise the impact of future revisions.

#### *Goods credits*

Iron ore and coal (in original terms)

- a negative \$100m adjustment has been applied to the 'metal ores and minerals' component for April 2012.
- a negative \$40m adjustment has been applied to the 'coal, coke and briquettes' component for April 2012. A negative \$60m adjustment to March 2012 applied in the previous issue remains.

#### *Goods debits*

Capital expenditure

- the balance of payments goods debits component 'capital goods n.e.s.' includes an estimate of expenditure on capital goods that have changed ownership but have not yet crossed the Customs frontier.

## RELATED RELEASES

### TRADE IN SERVICES DATA CUBE

The data cube *International Trade in Services by Country, by State and by Detailed Services Category, Calendar Year, 2011* (cat. no. 5368.0.55.004) was released on 15 May 2012 and is accessible on the ABS website <<http://www.abs.gov.au>>.

### CHARACTERISTICS OF AUSTRALIAN EXPORTERS

The publication *Characteristics of Australian Exporters, 2010–11* (cat. no. 5368.0.55.006) was released on 28 May 2012 and is accessible on the ABS website <<http://www.abs.gov.au>>. This publication examines the number and characteristics of Australia's exporters. Estimates of exporters of merchandise trade are compiled from data sourced from the Australian Customs and Border Protection Service and from the Australian Taxation Office's Australian Business Register. Estimates of exporters of services are compiled largely from the ABS Survey of International Trade in Services.

### CAPITAL EXPENDITURE FEATURE ARTICLE

The March quarter 2012 issue of *Private New Capital Expenditure and Expected Expenditure* (cat. no. 5625.0) was released on 31 May 2012 and is accessible on the ABS website <<http://www.abs.gov.au>>. It contains a feature article titled '*Mining Investment in ABS Publications*'. This article explores mining investment in an international context and advises users of the relevant ABS publications to best monitor capital expenditure over time.

## TIME SERIES DATA

### TIME SERIES DATA

Tables 1 to 16 of this publication are available free on the ABS website <<http://www.abs.gov.au>> from the 'Downloads' tab of this issue with longer time series. A number of these tables present more detailed breakdowns than included in the publication. A number of additional tables are available free on the ABS website.

#### *Tables with more detailed breakdowns:*

- 11a Services credits: Original – Quarter<sup>1</sup>
- 11b Services debits: Original – Quarter<sup>1</sup>
- 12b Merchandise exports by Standard International Trade Classification (3 digit), FOB Value
- 13b Merchandise imports by Standard International Trade Classification (3 digit), Customs Value
- 14a Merchandise exports, Country and Country Groups, FOB Value
- 14b Merchandise imports, Country and Country Groups, Customs Value

#### *Additional tables:*

- 31 Merchandise exports by Broad Economic Category (BEC)
- 32a Merchandise exports, Industry (ANZSIC 2006), FOB Value – from July 2005 onward
- 32b Merchandise exports, Industry (ANZSIC 1993), FOB Value – from January 1988 to June 2009
- 33 Merchandise imports by Broad Economic Category (BEC)
- 34 Merchandise imports by Balance of Payments Broad Economic Category (BoPBEC)
- 35a Merchandise imports, Industry (ANZSIC 2006), Customs Value – from July 2005 onward
- 35b Merchandise imports, Industry (ANZSIC 1993), Customs Value – from January 1988 to June 2009
- 36 Merchandise exports, State by Country and Country Groups
- 37 Merchandise imports, State by Country and Country Groups
- 91 Monthly seasonal adjustment factors and forward factors for 12 months.

<sup>1</sup> With a one quarter lag for the more detailed breakdowns.

## TIME SERIES DATA *continued*

### TRADE IN SERVICES DATA CUBES

Trade in services data cubes are usually updated on an annual basis. Calendar year (cat. no. 5368.0.55.004) statistics are updated following the March issue of this publication and financial year (cat. no. 5368.0.55.003) statistics are updated following the September issue of this publication.

The following tables were included in the calendar and financial year data cubes:

- 1 International trade in services, credits, state by year
- 2 International trade in services, credits, year by state
- 3 International trade in services, debits, state by year
- 4 International trade in services, debits, year by state
- 5 International trade in services, credits, year by country and service
- 6 International trade in services, credits, service by year and by country
- 7 International trade in services, debits, year by country and service
- 8 International trade in services, debits, service by year and by country
- 9 International trade in services, credits, year by country and travel service
- 10 International trade in services, debits, year by country and travel service
- 11 International trade in services, credits, education related travel, by educational sector, by type of expenditure by year.

## ANALYSIS AND COMMENTS

### BALANCE ON GOODS AND SERVICES

In trend terms, the balance on goods and services was a deficit of \$1,025m in April 2012, a rise of \$112m on the deficit in March 2012.

In seasonally adjusted terms, the balance on goods and services was a deficit of \$203m in April 2012, a fall of \$1,079m on the deficit in March 2012.

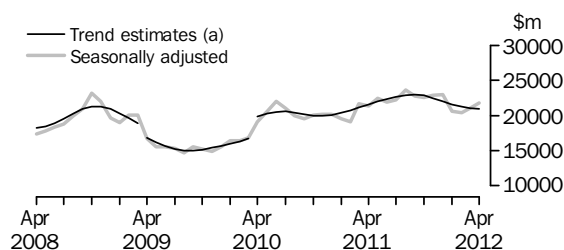
### EXPORTS OF GOODS AND SERVICES

Between March and April 2012 the trend estimate of goods and services credits fell \$94m to \$25,119m.

In seasonally adjusted terms, goods and services credits rose \$838m (3%) to \$26,082m. Non-rural goods rose \$746m (4%) and rural goods rose \$86m (3%). Non-monetary gold fell \$24m (2%). Net exports of goods under merchanting remained steady at \$30m. Services credits rose \$30m (1%).

#### Exports of goods

### GOODS CREDITS



(a) Trend breaks of \$1,900m to April 2008, \$1,400m to April 2009 and \$2,500m to April 2010 have been applied.

### RURAL GOODS

In trend terms, exports of rural goods fell \$21m (1%) to \$2,716m.

In seasonally adjusted terms, exports of rural goods rose \$86m (3%) to \$2,858m.

The main component contributing to the rise in seasonally adjusted estimates was wool and sheepskins, up \$38m (16%).

### NON-RURAL GOODS

In trend terms, exports of non-rural goods fell \$65m to \$16,935m.

In seasonally adjusted terms, exports of non-rural goods rose \$746m (4%) to \$17,653m.

The main components contributing to the rise in seasonally adjusted estimates were:

- metal ores and minerals, up \$660m (10%)
- other manufactures, up \$108m (8%)
- other non-rural (incl. sugar and beverages), up \$92m (11%).

Partly offsetting these rises was the metals (excl. non-monetary gold) component, down \$76m (8%).

For price and volume details, see the *Selected commodities* section on page 12.



## ANALYSIS AND COMMENTS *continued*

### *Exports of goods continued*

#### NET EXPORTS OF GOODS UNDER MERCHANTING

In trend terms, net exports of goods under merchanting fell \$2m (6%) to \$30m.

In seasonally adjusted terms, net exports of goods under merchanting remained steady at \$30m.

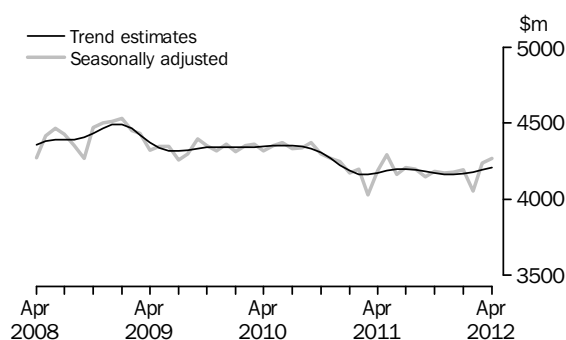
#### NON-MONETARY GOLD

In trend terms, exports of non-monetary gold fell \$22m (2%) to \$1,230m.

In original and seasonally adjusted terms, exports of non-monetary gold fell \$24m (2%) to \$1,272m.

### *Exports of services*

#### SERVICES CREDITS



In trend terms, services credits rose \$15m to \$4,208m.

In seasonally adjusted terms, services credits rose \$30m (1%) to \$4,269m.

The main component contributing to the rise in seasonally adjusted estimates was travel, up \$35m (1%).

In seasonally adjusted terms, tourism related services credits rose \$34m (1%) to \$2,873m.

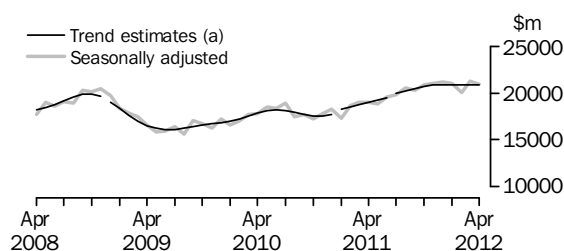
## IMPORTS OF GOODS AND SERVICES

Between March and April 2012 the trend estimate of goods and services debits rose \$18m to \$26,144m.

In seasonally adjusted terms, goods and services debits fell \$241m (1%) to \$26,285m. Intermediate and other merchandise goods fell \$465m (5%) and non-monetary gold fell \$43m (10%). Capital goods rose \$103m (2%) and consumption goods rose \$75m (1%). Services debits rose \$89m (2%).

### Imports of goods

## GOODS DEBITS



(a) A trend break of \$200m has been applied to December 2008, trend breaks of \$300m have been applied to January 2011 and July 2011.

## CONSUMPTION GOODS

In trend terms, imports of consumption goods rose \$30m (1%) to \$5,650m.

In seasonally adjusted terms, imports of consumption goods rose \$75m (1%) to \$5,728m.

The main components contributing to the rise in seasonally adjusted estimates were:

- non-industrial transport equipment, up \$180m (12%)
- food and beverages, mainly for consumption, up \$57m (7%).

Partly offsetting these rises was the consumption goods n.e.s. component, down \$175m (9%).

## CAPITAL GOODS

In trend terms, imports of capital goods fell \$5m to \$5,750m.

In seasonally adjusted terms, imports of capital goods rose \$103m (2%) to \$5,800m.

The main components contributing to the rise in seasonally adjusted estimates were:

- machinery and industrial equipment, up \$122m (7%)
- industrial transport equipment n.e.s., up \$77m (10%).

Partly offsetting these rises was the capital goods n.e.s. component, down \$120m (8%).

## ANALYSIS AND COMMENTS *continued*

### *Imports of goods continued*

#### INTERMEDIATE AND OTHER MERCHANDISE GOODS

In trend terms, imports of intermediate and other merchandise goods fell \$9m to \$9,035m.

In seasonally adjusted terms, imports of intermediate and other merchandise goods fell \$465m (5%) to \$8,984m.

The main component contributing to the fall in the seasonally adjusted estimates was fuels and lubricants, down \$701m (19%).

Partly offsetting this fall were:

- processed industrial supplies n.e.s., up \$119m (6%)
- primary industrial supplies n.e.s., up \$96m (93%).

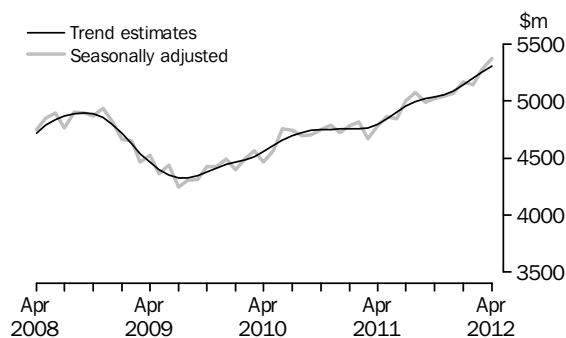
#### NON-MONETARY GOLD

In trend terms, imports of non-monetary gold fell \$47m (10%) to \$405m.

In original and seasonally adjusted terms, non-monetary gold fell \$43m (10%) to \$403m.

### *Imports of services*

#### SERVICES DEBITS



In trend terms, services debits rose \$50m (1%) to \$5,305m.

In seasonally adjusted terms, services debits rose \$89m (2%) to \$5,370m.

The main components contributing to the rise in the seasonally adjusted estimates were:

- other services, up \$57m (4%)
- transport, up \$31m (2%).

In seasonally adjusted terms, tourism related services debits rose \$38m (1%) to \$2,942m.

## ANALYSIS AND COMMENTS *continued*

Selected commodities

SELECTED COMMODITIES, Quantity and unit value analysis: **Recorded Trade Basis** (a)—Original terms

|                    |  | CHANGE IN   |             |             |             |             |             |
|--------------------|--|-------------|-------------|-------------|-------------|-------------|-------------|
|                    |  | Nov<br>2011 | Dec<br>2011 | Jan<br>2012 | Feb<br>2012 | Mar<br>2012 | Apr<br>2012 |
|                    |  | %           | %           | %           | %           | %           | %           |
| IRON ORE           |  |             |             |             |             |             |             |
| <b>Lump</b>        |  |             |             |             |             |             |             |
| Quantity           |  | -7          | 23          | -28         | 17          | -1          | 26          |
| Unit value         |  | -13         | -2          | -3          | -3          | 1           | 3           |
| <b>Fines</b>       |  |             |             |             |             |             |             |
| Quantity           |  | -9          | 12          | -21         | 17          | -8          | 14          |
| Unit value         |  | -14         | -5          | -1          | —           | 4           | 2           |
| COAL               |  |             |             |             |             |             |             |
| <b>Hard coking</b> |  |             |             |             |             |             |             |
| Quantity           |  | -1          | 15          | 1           | -26         | -4          | 7           |
| Unit value         |  | -2          | -5          | -10         | -5          | 1           | —           |
| <b>Semi-soft</b>   |  |             |             |             |             |             |             |
| Quantity           |  | 8           | —           | -5          | 1           | 9           | 6           |
| Unit value         |  | -5          | -8          | -5          | -12         | 7           | 1           |
| <b>Thermal</b>     |  |             |             |             |             |             |             |
| Quantity           |  | -7          | 24          | -13         | -15         | 5           | 16          |
| Unit value         |  | 1           | -1          | -2          | -4          | 1           | -3          |

— nil or rounded to zero (including null cells)

(a) Data in this table are on a revised merchandise trade basis and exclude value adjustments applied to balance of payments series.

On a recorded trade basis, in original terms (noting the footnote in the above table), between March and April 2012 large value movements were recorded for the following selected commodities:

Iron ore lump rose \$353m (29%) with quantities up 26% and unit values up 3%.

Exports to:

- China rose \$180m (24%), with quantities up 17% and unit values up 5%
- Japan rose \$124m (45%), with quantities up 46% and unit values down 1%
- Republic of Korea rose \$58m (79%), with quantities up 83% and unit values down 3%.

Iron ore fines rose \$541m (17%) with quantities up 14% and unit values up 2%.

Exports to:

- China rose \$297m (12%), with quantities up 9% and unit values up 4%
- Japan rose \$135m (31%), with quantities up 34% and unit values down 2%
- Republic of Korea rose \$68m (20%), with quantities up 20%.

Hard coking coal rose \$94m (7%) with quantities up 7%. Exports to:

- Japan rose \$86m (29%), with quantities up 23% and unit values up 5%
- United Kingdom rose \$67m (100%), driven by quantities
- China fell \$96m (44%), with quantities down 40% and unit values down 5%.

## ANALYSIS AND COMMENTS *continued*

### *Selected commodities continued*

Semi-soft coal rose \$50m (7%) with quantities up 6% and unit values up 1%. Exports to:

- Taiwan rose \$62m, driven by quantities
- Japan rose \$20m (7%), with quantities up 13% and unit values down 5%
- Republic of Korea fell \$50m (33%), with quantities down 29% and unit values down 6%.

Thermal coal rose \$165m (13%) with quantities up 16% and unit values down 3%.

Exports to:

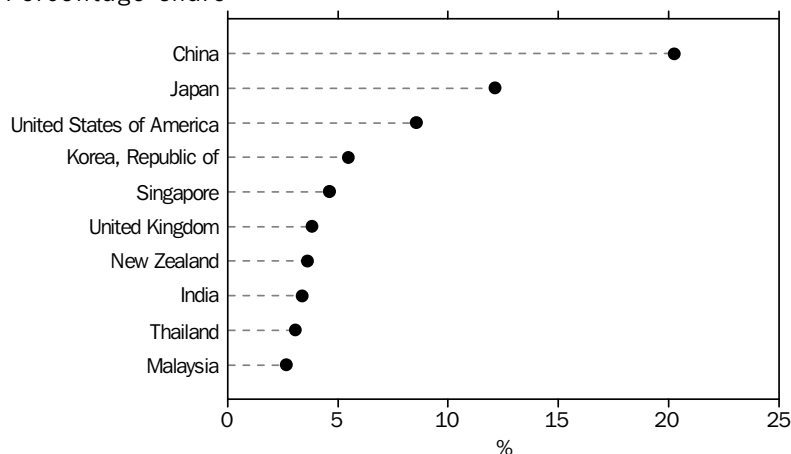
- China rose \$101m (49%), driven by quantities
- Mexico rose \$83m (100%), driven by quantities
- Republic of Korea rose \$66m (44%), with quantities up 50% and unit values down 4%
- Japan fell \$89m (13%), with quantities down 12% and unit values down 1%.

## ANALYSIS AND COMMENTS *continued*

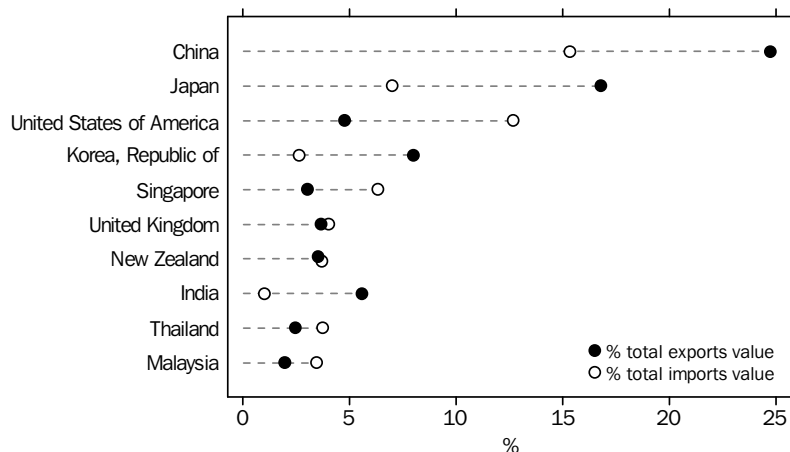
### COUNTRY BREAKDOWN

The following charts show Australia's major trading partners for the calendar year 2011. The charts include both trade in goods (on a recorded trade basis) and trade in services (on a balance of payments basis). The first chart shows the countries with the largest two-way trade i.e. combined trade in both exports and imports of goods and services. The second chart shows separately total exports and total imports, for the ten countries in the first chart.

TOTAL VALUE OF TWO-WAY TRADE, By major countries - 2011, Percentage share



EXPORTS AND IMPORTS OF GOODS AND SERVICES, By major countries - 2011



Combining trade in goods (on a recorded trade basis) and trade in services (on a balance of payments basis) provides a good approximation of total trade. Some components will be excluded (e.g. Net exports of goods under merchanting credits and Goods procured in ports by carriers debits). The Manufacturing services on physical inputs owned by others component country information is already available in the goods estimates and is therefore not included in the services estimates to avoid double counting. These components are unlikely to impact on the broader analysis.

## ANALYSIS AND COMMENTS *continued*

### COUNTRY BREAKDOWN

*continued*

Imports data with the confidentiality restrictions 'no commodity details' or 'no value details' are excluded from the individual country and included in 'no country details' in the detailed breakdown presented in the time series spreadsheet table 14b. In 2011, these restrictions represented 3% of the total imports value. In table 14 of this publication, the 'no country details' data is included in 'other countries'.

## GOODS AND SERVICES(a), Summary—Seasonally Adjusted and Trend Estimates

|  | May<br>2011    | Jun<br>2011    | Jul<br>2011    | Aug<br>2011    | Sep<br>2011    | Oct<br>2011    | Nov<br>2011    | Dec<br>2011    | Jan<br>2012    | Feb<br>2012    | Mar<br>2012    | Apr<br>2012    |
|--|----------------|----------------|----------------|----------------|----------------|----------------|----------------|----------------|----------------|----------------|----------------|----------------|
|  | \$m            | \$m            | \$m            | \$m            | \$m            | \$m            | \$m            | \$m            | \$m            | \$m            | \$m            | \$m            |
| SEASONALLY ADJUSTED                          |                |                |                |                |                |                |                |                |                |                |                |                |
| <b>BALANCE</b>                               |                |                |                |                |                |                |                |                |                |                |                |                |
| <b>On goods and services</b>                 | <b>3 037</b>   | <b>1 657</b>   | <b>1 624</b>   | <b>2 196</b>   | <b>1 615</b>   | <b>868</b>     | <b>1 027</b>   | <b>877</b>     | <b>-1 407</b>  | <b>-776</b>    | <b>-1 282</b>  | <b>-203</b>    |
| <b>CREDITS</b>                               |                |                |                |                |                |                |                |                |                |                |                |                |
| Total goods and services                     | 26 752         | 26 026         | 26 418         | 27 819         | 26 858         | 26 738         | 27 050         | 27 144         | 24 755         | 24 426         | 25 244         | 26 082         |
| <b>Total goods</b>                           | <b>22 460</b>  | <b>21 862</b>  | <b>22 208</b>  | <b>23 619</b>  | <b>22 709</b>  | <b>22 552</b>  | <b>22 877</b>  | <b>22 968</b>  | <b>20 561</b>  | <b>20 374</b>  | <b>21 005</b>  | <b>21 813</b>  |
| Rural goods(b)                               | 2 808          | 2 869          | 2 810          | 2 953          | 2 968          | 3 028          | 3 029          | 2 950          | 2 820          | 2 519          | 2 772          | 2 858          |
| Non-rural goods(b)                           | 18 033         | 18 261         | 18 089         | 18 998         | 18 422         | 18 389         | 18 346         | 18 037         | 16 857         | 16 604         | 16 907         | 17 653         |
| Net exports of goods under<br>merchandise(c) | 2              | 2              | -2             | -2             | -4             | 33             | 33             | 32             | 30             | 30             | 30             | 30             |
| Non-monetary gold(c)                         | 1 617          | 730            | 1 312          | 1 670          | 1 322          | 1 103          | 1 469          | 1 949          | 854            | 1 221          | 1 296          | 1 272          |
| <b>Total services</b>                        | <b>4 292</b>   | <b>4 164</b>   | <b>4 210</b>   | <b>4 200</b>   | <b>4 149</b>   | <b>4 185</b>   | <b>4 173</b>   | <b>4 177</b>   | <b>4 194</b>   | <b>4 052</b>   | <b>4 239</b>   | <b>4 269</b>   |
| <b>DEBITS</b>                                |                |                |                |                |                |                |                |                |                |                |                |                |
| Total goods and services                     | -23 715        | -24 369        | -24 794        | -25 623        | -25 243        | -25 870        | -26 023        | -26 268        | -26 162        | -25 202        | -26 526        | -26 285        |
| <b>Total goods</b>                           | <b>-18 852</b> | <b>-19 527</b> | <b>-19 796</b> | <b>-20 547</b> | <b>-20 252</b> | <b>-20 847</b> | <b>-20 982</b> | <b>-21 200</b> | <b>-20 994</b> | <b>-20 064</b> | <b>-21 245</b> | <b>-20 915</b> |
| Consumption goods                            | -5 222         | -5 209         | -5 379         | -5 529         | -5 368         | -5 446         | -5 353         | -5 594         | -5 749         | -5 318         | -5 653         | -5 728         |
| Capital goods                                | -4 386         | -4 714         | -5 191         | -5 190         | -5 403         | -5 498         | -5 820         | -5 759         | -5 838         | -5 617         | -5 697         | -5 800         |
| Intermediate and other<br>merchandise goods  | -8 876         | -9 214         | -8 683         | -9 278         | -8 894         | -9 006         | -9 127         | -9 350         | -8 881         | -8 594         | -9 449         | -8 984         |
| Non-monetary gold(c)                         | -368           | -390           | -543           | -549           | -588           | -897           | -682           | -498           | -526           | -536           | -446           | -403           |
| <b>Total services</b>                        | <b>-4 863</b>  | <b>-4 842</b>  | <b>-4 999</b>  | <b>-5 076</b>  | <b>-4 991</b>  | <b>-5 023</b>  | <b>-5 040</b>  | <b>-5 068</b>  | <b>-5 168</b>  | <b>-5 138</b>  | <b>-5 281</b>  | <b>-5 370</b>  |

## TREND ESTIMATES (d)

|   |                |                |                |                |                |                |                |                |                |                |                |                |
|---|----------------|----------------|----------------|----------------|----------------|----------------|----------------|----------------|----------------|----------------|----------------|----------------|
| <b>BALANCE</b>                              |                |                |                |                |                |                |                |                |                |                |                |                |
| <b>On goods and services</b>                | <b>2 045</b>   | <b>2 148</b>   | <b>1 892</b>   | <b>1 835</b>   | <b>1 614</b>   | <b>1 230</b>   | <b>713</b>     | <b>167</b>     | <b>-318</b>    | <b>-675</b>    | <b>-913</b>    | <b>-1 025</b>  |
| <b>CREDITS</b>                              |                |                |                |                |                |                |                |                |                |                |                |                |
| Total goods and services                    | 26 142         | 26 509         | 26 816         | 27 047         | 27 124         | 26 977         | 26 609         | 26 140         | 25 704         | 25 394         | 25 213         | 25 119         |
| <b>Total goods</b>                          | <b>21 955</b>  | <b>22 310</b>  | <b>22 616</b>  | <b>22 852</b>  | <b>22 939</b>  | <b>22 805</b>  | <b>22 444</b>  | <b>21 977</b>  | <b>21 537</b>  | <b>21 216</b>  | <b>21 021</b>  | <b>20 911</b>  |
| Rural goods(b)                              | 2 785          | 2 838          | 2 891          | 2 947          | 2 985          | 2 987          | 2 951          | 2 890          | 2 824          | 2 771          | 2 737          | 2 716          |
| Non-rural goods(b)                          | 17 950         | 18 234         | 18 445         | 18 566         | 18 561         | 18 387         | 18 062         | 17 691         | 17 363         | 17 133         | 17 000         | 16 935         |
| Net exports of goods under<br>merchandise   | 3              | -1             | -1             | 3              | 11             | 19             | 26             | 30             | 32             | 32             | 32             | 30             |
| Non-monetary gold                           | 1 218          | 1 239          | 1 281          | 1 336          | 1 382          | 1 412          | 1 405          | 1 365          | 1 319          | 1 281          | 1 252          | 1 230          |
| <b>Total services</b>                       | <b>4 187</b>   | <b>4 198</b>   | <b>4 200</b>   | <b>4 196</b>   | <b>4 185</b>   | <b>4 172</b>   | <b>4 165</b>   | <b>4 163</b>   | <b>4 167</b>   | <b>4 177</b>   | <b>4 193</b>   | <b>4 208</b>   |
| <b>DEBITS</b>                               |                |                |                |                |                |                |                |                |                |                |                |                |
| Total goods and services                    | -24 097        | -24 361        | -24 924        | -25 213        | -25 510        | -25 747        | -25 896        | -25 973        | -26 022        | -26 069        | -26 126        | -26 144        |
| <b>Total goods</b>                          | <b>-19 255</b> | <b>-19 462</b> | <b>-19 972</b> | <b>-20 218</b> | <b>-20 488</b> | <b>-20 709</b> | <b>-20 839</b> | <b>-20 883</b> | <b>-20 883</b> | <b>-20 872</b> | <b>-20 871</b> | <b>-20 839</b> |
| Consumption goods                           | -5 356         | -5 384         | -5 397         | -5 410         | -5 428         | -5 450         | -5 478         | -5 509         | -5 545         | -5 583         | -5 620         | -5 650         |
| Capital goods(e)                            | -4 544         | -4 625         | -5 060         | -5 229         | -5 409         | -5 564         | -5 671         | -5 724         | -5 749         | -5 756         | -5 755         | -5 750         |
| Intermediate and other<br>merchandise goods | -8 959         | -9 003         | -8 998         | -8 990         | -9 004         | -9 022         | -9 032         | -9 038         | -9 036         | -9 035         | -9 044         | -9 035         |
| Non-monetary gold                           | -396           | -450           | -518           | -589           | -647           | -674           | -658           | -611           | -553           | -498           | -452           | -405           |
| <b>Total services</b>                       | <b>-4 842</b>  | <b>-4 899</b>  | <b>-4 952</b>  | <b>-4 995</b>  | <b>-5 022</b>  | <b>-5 037</b>  | <b>-5 057</b>  | <b>-5 090</b>  | <b>-5 139</b>  | <b>-5 197</b>  | <b>-5 255</b>  | <b>-5 305</b>  |

(a) For sign conventions, see paragraph 15 of the Explanatory Notes.

(b) For all time periods, estimates for sugar, sugar preparations and honey are included in Non-rural goods.

(c) This component is not seasonally adjusted.

(d) Caution should be used when interpreting recent trend estimates as they may be affected by unusual economic factors. For more details on trend estimates, please see paragraph 19 of the Explanatory Notes.

(e) A trend break of \$300m has been applied to Capital goods debits and related aggregates in July 2011. This trend break will be re-assessed in a future issue.



## GOODS AND SERVICES(a), Summary—Original

|   | May<br>2011    | Jun<br>2011    | Jul<br>2011    | Aug<br>2011    | Sep<br>2011    | Oct<br>2011    | Nov<br>2011    | Dec<br>2011    | Jan<br>2012    | Feb<br>2012    | Mar<br>2012    | Apr<br>2012    |
|---|----------------|----------------|----------------|----------------|----------------|----------------|----------------|----------------|----------------|----------------|----------------|----------------|
|   | \$m            | \$m            | \$m            | \$m            | \$m            | \$m            | \$m            | \$m            | \$m            | \$m            | \$m            | \$m            |
| <b>BALANCE</b>                              |                |                |                |                |                |                |                |                |                |                |                |                |
| <b>On goods and services</b>                | <b>3 985</b>   | <b>2 102</b>   | <b>1 450</b>   | <b>2 516</b>   | <b>1 151</b>   | <b>554</b>     | <b>-1 086</b>  | <b>2 209</b>   | <b>-3 168</b>  | <b>-218</b>    | <b>-524</b>    | <b>746</b>     |
| <b>CREDITS</b>                              |                |                |                |                |                |                |                |                |                |                |                |                |
| Total goods and services                    | 26 984         | 26 208         | 26 510         | 29 057         | 27 619         | 27 779         | 26 337         | 28 544         | 22 544         | 23 297         | 25 363         | 25 883         |
| <b>Total goods</b>                          | <b>22 752</b>  | <b>22 303</b>  | <b>22 290</b>  | <b>24 783</b>  | <b>23 559</b>  | <b>23 405</b>  | <b>22 121</b>  | <b>24 387</b>  | <b>18 563</b>  | <b>19 127</b>  | <b>21 005</b>  | <b>21 472</b>  |
| Rural goods(b)                              | 3 077          | 2 910          | 2 824          | 2 926          | 2 772          | 2 956          | 2 850          | 3 047          | 2 417          | 2 622          | 2 979          | 2 909          |
| Non-rural goods(b)                          | 18 056         | 18 661         | 18 156         | 20 189         | 19 469         | 19 313         | 17 769         | 19 359         | 15 262         | 15 254         | 16 700         | 17 261         |
| Net exports of goods under<br>merchandising | 2              | 2              | -2             | -2             | -4             | 33             | 33             | 32             | 30             | 30             | 30             | 30             |
| Non-monetary gold                           | 1 617          | 730            | 1 312          | 1 670          | 1 322          | 1 103          | 1 469          | 1 949          | 854            | 1 221          | 1 296          | 1 272          |
| <b>Total services</b>                       | <b>4 232</b>   | <b>3 905</b>   | <b>4 220</b>   | <b>4 274</b>   | <b>4 060</b>   | <b>4 374</b>   | <b>4 216</b>   | <b>4 157</b>   | <b>3 981</b>   | <b>4 170</b>   | <b>4 358</b>   | <b>4 411</b>   |
| <b>DEBITS</b>                               |                |                |                |                |                |                |                |                |                |                |                |                |
| Total goods and services                    | -22 999        | -24 106        | -25 060        | -26 541        | -26 468        | -27 225        | -27 423        | -26 335        | -25 712        | -23 515        | -25 887        | -25 137        |
| <b>Total goods</b>                          | <b>-18 392</b> | <b>-19 225</b> | <b>-19 754</b> | <b>-21 474</b> | <b>-21 044</b> | <b>-21 914</b> | <b>-22 563</b> | <b>-21 024</b> | <b>-20 312</b> | <b>-19 011</b> | <b>-20 903</b> | <b>-19 852</b> |
| Consumption goods                           | -4 886         | -4 994         | -5 375         | -5 879         | -5 858         | -5 978         | -6 138         | -5 610         | -5 335         | -4 964         | -5 319         | -5 182         |
| Capital goods                               | -4 314         | -4 753         | -5 222         | -5 412         | -5 554         | -5 825         | -6 245         | -5 737         | -5 562         | -5 241         | -5 696         | -5 544         |
| Intermediate and other<br>merchandise goods | -8 824         | -9 088         | -8 614         | -9 634         | -9 044         | -9 214         | -9 498         | -9 179         | -8 889         | -8 270         | -9 442         | -8 723         |
| Non-monetary gold                           | -368           | -390           | -543           | -549           | -588           | -897           | -682           | -498           | -526           | -536           | -446           | -403           |
| <b>Total services</b>                       | <b>-4 607</b>  | <b>-4 881</b>  | <b>-5 306</b>  | <b>-5 067</b>  | <b>-5 424</b>  | <b>-5 311</b>  | <b>-4 860</b>  | <b>-5 311</b>  | <b>-5 400</b>  | <b>-4 504</b>  | <b>-4 984</b>  | <b>-5 285</b>  |

(a) For sign conventions, see paragraph 15 of the Explanatory Notes.

(b) For all time periods, estimates for sugar, sugar preparations and honey are included in Non-rural goods.

|   |                |                |                |               |               |               | 10 MONTHS<br>ENDED APRIL |                | Change     |
|---|----------------|----------------|----------------|---------------|---------------|---------------|--------------------------|----------------|------------|
|   | 2008-09        | 2009-10        | 2010-11        | Feb<br>2012   | Mar<br>2012   | Apr<br>2012   | 2011                     | 2012           |            |
|   | \$m            | \$m            | \$m            | \$m           | \$m           | \$m           | \$m                      | \$m            | %          |
| <b>Total goods credits</b>                          | <b>231 623</b> | <b>201 751</b> | <b>246 979</b> | <b>19 127</b> | <b>21 005</b> | <b>21 472</b> | <b>201 924</b>           | <b>220 712</b> | <b>9.3</b> |
| General merchandise                                 | 213 814        | 187 201        | 232 500        | 17 876        | 19 679        | 20 170        | 189 796                  | 207 034        | 9.1        |
| <i>Rural goods(a)</i>                               | 29 429         | 25 589         | 30 473         | 2 622         | 2 979         | 2 909         | 24 486                   | 28 302         | 15.6       |
| Meat and meat preparations                          | 7 454          | 6 350          | 6 930          | 554           | 610           | 563           | 5 727                    | 5 879          | 2.7        |
| Cereal grains and cereal preparations               | 6 881          | 5 266          | 7 351          | 783           | 847           | 829           | 5 851                    | 7 355          | 25.7       |
| Wool and sheepskins                                 | 2 322          | 2 306          | 3 048          | 276           | 318           | 302           | 2 512                    | 2 648          | 5.4        |
| Other rural(a)                                      | 12 772         | 11 667         | 13 144         | 1 009         | 1 204         | 1 215         | 10 396                   | 12 420         | 19.5       |
| <i>Non-rural goods(a)</i>                           | 184 385        | 161 612        | 202 027        | 15 254        | 16 700        | 17 261        | 165 310                  | 178 732        | 8.1        |
| Metal ores and minerals                             | 52 057         | 53 611         | 79 448         | 6 095         | 6 491         | 7 239         | 64 473                   | 71 369         | 10.7       |
| Coal, coke and briquettes                           | 54 954         | 36 777         | 44 101         | 3 300         | 3 322         | 3 657         | 35 730                   | 41 141         | 15.1       |
| Other mineral fuels                                 | 20 706         | 18 964         | 23 594         | 1 770         | 2 300         | 2 097         | 19 432                   | 21 299         | 9.6        |
| Metals (excl. non-monetary gold)                    | 12 394         | 10 735         | 12 687         | 724           | 1 046         | 920           | 10 544                   | 9 693          | -8.1       |
| Machinery   | 8 900          | 7 977          | 8 444          | 682           | 784           | 667           | 7 057                    | 7 293          | 3.3        |
| Transport equipment                                 | 5 090          | 4 073          | 3 902          | 396           | 404           | 318           | 3 155                    | 3 422          | 8.5        |
| Other manufactures                                  | 17 601         | 16 375         | 16 289         | 1 327         | 1 440         | 1 355         | 13 507                   | 13 939         | 3.2        |
| Other non-rural (incl. sugar and beverages)         | 11 052         | 11 711         | 11 972         | 823           | 775           | 863           | 10 096                   | 9 190          | -9.0       |
| Goods procured in ports by carriers                 | 1 631          | 1 389          | 1 590          | 137           | 138           | 145           | 1 316                    | 1 386          | 5.3        |
| Net exports of goods under merchanting              | 301            | 250            | 223            | 30            | 30            | 30            | 219                      | 210            | -4.1       |
| Goods acquired under merchanting (negative exports) | -2 386         | -1 799         | -1 723         | -122          | -121          | -131          | -1 541                   | -1 206         | 21.7       |
| Goods sold under merchanting                        | 2 687          | 2 049          | 1 946          | 152           | 151           | 161           | 1 760                    | 1 416          | -19.5      |
| Non-monetary gold                                   | 17 508         | 14 300         | 14 256         | 1 221         | 1 296         | 1 272         | 11 909                   | 13 468         | 13.1       |

(a) For all time periods, estimates for sugar, sugar preparations and honey are included in Other non-rural.

## GOODS DEBITS(a), Original

|  |                 |                 |                 |                |                |                | 10 MONTHS<br>ENDED APRIL |                 | Change       |
|--|-----------------|-----------------|-----------------|----------------|----------------|----------------|--------------------------|-----------------|--------------|
|  | 2008-09         | 2009-10         | 2010-11         | Feb<br>2012    | Mar<br>2012    | Apr<br>2012    | 2011                     | 2012            |              |
|  | \$m             | \$m             | \$m             | \$m            | \$m            | \$m            | \$m                      | \$m             | %            |
| <b>Total goods debits</b>                    | <b>-220 890</b> | <b>-204 995</b> | <b>-219 507</b> | <b>-19 011</b> | <b>-20 903</b> | <b>-19 852</b> | <b>-181 890</b>          | <b>-207 851</b> | <b>-14.3</b> |
| General merchandise                          | -209 587        | -198 132        | -214 540        | -18 475        | -20 457        | -19 449        | -177 681                 | -202 183        | -13.8        |
| Consumption goods                            | -61 419         | -62 333         | -63 560         | -4 964         | -5 319         | -5 182         | -53 680                  | -55 638         | -3.6         |
| Food and beverages, mainly for consumption   | -8 857          | -8 712          | -8 951          | -730           | -718           | -730           | -7 541                   | -8 221          | -9.0         |
| Household electrical items                   | -5 488          | -5 505          | -4 861          | -263           | -315           | -362           | -4 090                   | -3 785          | 7.5          |
| Non-industrial transport equipment           | -13 247         | -16 288         | -15 953         | -1 457         | -1 490         | -1 563         | -13 539                  | -14 332         | -5.9         |
| Textiles, clothing and footwear              | -8 287          | -7 514          | -8 412          | -723           | -695           | -698           | -7 166                   | -7 397          | -3.2         |
| Toys, books and leisure goods                | -5 277          | -4 675          | -4 443          | -284           | -275           | -269           | -3 762                   | -3 635          | 3.4          |
| Consumption goods n.e.s.                     | -20 263         | -19 639         | -20 940         | -1 507         | -1 826         | -1 560         | -17 582                  | -18 268         | -3.9         |
| Capital goods                                | -50 422         | -47 507         | -52 114         | -5 241         | -5 696         | -5 544         | -43 047                  | -56 038         | -30.2        |
| Machinery and industrial equipment           | -18 488         | -15 561         | -15 727         | -1 542         | -1 632         | -1 733         | -12 973                  | -16 548         | -27.6        |
| ADP equipment                                | -7 257          | -7 633          | -7 786          | -502           | -690           | -624           | -6 342                   | -6 538          | -3.1         |
| Telecommunications equipment                 | -6 431          | -6 051          | -6 999          | -504           | -587           | -549           | -5 888                   | -6 499          | -10.4        |
| Civil aircraft and confidentialised items(b) | -5 524          | -5 051          | -5 254          | -453           | -402           | -466           | -4 527                   | -5 036          | -11.2        |
| Industrial transport equipment n.e.s.        | -6 538          | -6 811          | -6 859          | -714           | -816           | -832           | -5 798                   | -7 250          | -25.0        |
| Capital goods n.e.s.                         | -6 184          | -6 400          | -9 489          | -1 526         | -1 569         | -1 340         | -7 519                   | -14 167         | -88.4        |
| Intermediate and other merchandise goods     | -97 746         | -88 292         | -98 866         | -8 270         | -9 442         | -8 723         | -80 954                  | -90 507         | -11.8        |
| Food and beverages, mainly for industry      | -1 186          | -1 035          | -1 223          | -119           | -104           | -88            | -1 014                   | -1 069          | -5.4         |
| Primary industrial supplies n.e.s.           | -1 901          | -1 346          | -1 713          | -92            | -93            | -177           | -1 356                   | -1 483          | -9.4         |
| Fuels and lubricants                         | -28 292         | -26 494         | -32 070         | -3 031         | -3 769         | -3 068         | -25 659                  | -31 692         | -23.5        |
| Parts for transport equipment                | -8 599          | -8 221          | -8 881          | -727           | -907           | -836           | -7 278                   | -8 372          | -15.0        |
| Parts for ADP equipment                      | -1 067          | -973            | -906            | -45            | -53            | -53            | -763                     | -574            | 24.8         |
| Other parts for capital goods                | -14 312         | -13 755         | -14 295         | -1 046         | -1 174         | -1 144         | -11 783                  | -11 502         | 2.4          |
| Organic and inorganic chemicals              | -5 384          | -4 355          | -4 471          | -327           | -379           | -371           | -3 788                   | -3 755          | 0.9          |
| Paper and paperboard                         | -2 403          | -2 299          | -2 339          | -167           | -168           | -160           | -1 989                   | -1 830          | 8.0          |
| Textile yarn and fabrics                     | -1 344          | -1 170          | -1 135          | -82            | -81            | -81            | -946                     | -927            | 2.0          |
| Iron and steel                               | -5 528          | -3 258          | -3 764          | -333           | -308           | -332           | -3 134                   | -3 189          | -1.8         |
| Plastics                                     | -3 028          | -2 733          | -2 886          | -227           | -236           | -232           | -2 400                   | -2 548          | -6.2         |
| Processed industrial supplies n.e.s.         | -21 919         | -20 026         | -21 915         | -1 849         | -1 895         | -1 951         | -18 089                  | -20 684         | -14.3        |
| Other merchandise goods(b)                   | -1 203          | -1 231          | -1 601          | -57            | -109           | -60            | -1 403                   | -1 229          | 12.4         |
| Goods procured in ports by carriers          | -1 580          | -1 396          | -1 667          | -168           | -166           | -170           | -1 352                   | -1 653          | -22.3        |
| Non-monetary gold                            | -11 303         | -6 863          | -4 967          | -536           | -446           | -403           | -4 209                   | -5 668          | -34.7        |

(a) For sign conventions, see paragraph 15 of the Explanatory Notes.

(b) From July 2008, commodities subject to a 'no commodity details' or 'no value details' restriction are included in Civil aircraft and confidentialised items. For earlier periods, commodities subject to a 'no commodity details' or 'no value details' restriction are included in Other merchandise goods.

## GOODS CREDITS, Seasonally Adjusted

|   | Jul<br>2011   | Aug<br>2011   | Sep<br>2011   | Oct<br>2011   | Nov<br>2011   | Dec<br>2011   | Jan<br>2012   | Feb<br>2012   | Mar<br>2012   | Apr<br>2012   |
|---|---------------|---------------|---------------|---------------|---------------|---------------|---------------|---------------|---------------|---------------|
|   | \$m           | \$m           | \$m           | \$m           | \$m           | \$m           | \$m           | \$m           | \$m           | \$m           |
| <b>Total goods credits</b>                  | <b>22 208</b> | <b>23 619</b> | <b>22 709</b> | <b>22 552</b> | <b>22 877</b> | <b>22 968</b> | <b>20 561</b> | <b>20 374</b> | <b>21 005</b> | <b>21 813</b> |
| General merchandise                         | 20 898        | 21 951        | 21 391        | 21 416        | 21 375        | 20 987        | 19 677        | 19 123        | 19 679        | 20 511        |
| <i>Rural goods</i>                          | 2 810         | 2 953         | 2 968         | 3 028         | 3 029         | 2 950         | 2 820         | 2 519         | 2 772         | 2 858         |
| Meat and meat preparations                  | 586           | 608           | 608           | 621           | 596           | 599           | 588           | 572           | 566           | 585           |
| Cereal grains and cereal preparations       | 702           | 668           | 762           | 778           | 894           | 823           | 749           | 669           | 722           | 738           |
| Wool and sheepskins                         | 253           | 344           | 279           | 283           | 241           | 258           | 297           | 240           | 233           | 271           |
| Other rural (a)                             | 1 270         | 1 332         | 1 319         | 1 346         | 1 298         | 1 270         | 1 187         | 1 038         | 1 251         | 1 265         |
| <i>Non-rural goods</i>                      | 18 089        | 18 998        | 18 422        | 18 389        | 18 346        | 18 037        | 16 857        | 16 604        | 16 907        | 17 653        |
| Metal ores and minerals                     | 7 436         | 7 808         | 7 708         | 7 524         | 7 340         | 7 178         | 6 104         | 6 516         | 6 442         | 7 102         |
| Coal, coke and briquettes (b)               | 4 235         | 4 365         | 4 161         | 4 278         | 4 310         | 4 297         | 4 010         | 3 684         | 3 799         | 3 846         |
| Other mineral fuels (c)                     | 1 831         | 2 192         | 2 028         | 2 105         | 2 125         | 2 155         | 2 172         | 2 054         | 2 243         | 2 182         |
| Metals (excl. non-monetary gold) (c)        | 1 077         | 1 029         | 1 004         | 967           | 1 060         | 923           | 977           | 844           | 978           | 902           |
| Machinery                                   | 708           | 727           | 723           | 748           | 721           | 757           | 732           | 719           | 732           | 719           |
| Transport equipment                         | 349           | 327           | 306           | 280           | 321           | 346           | 460           | 373           | 375           | 356           |
| Other manufactures                          | 1 376         | 1 427         | 1 445         | 1 360         | 1 392         | 1 364         | 1 406         | 1 361         | 1 374         | 1 482         |
| Other non-rural (incl. sugar and beverages) | 939           | 986           | 915           | 990           | 947           | 878           | 858           | 917           | 823           | 915           |
| Goods procured in ports by carriers (c)     | 136           | 138           | 133           | 136           | 131           | 139           | 138           | 137           | 142           | 148           |
| Net exports of goods under merchanting (d)  | -2            | -2            | -4            | 33            | 33            | 32            | 30            | 30            | 30            | 30            |
| Non-monetary gold (d)                       | 1 312         | 1 670         | 1 322         | 1 103         | 1 469         | 1 949         | 854           | 1 221         | 1 296         | 1 272         |

- (a) For all time periods, estimates for sugar, sugar preparations and honey are included in Other non-rural.
- (b) From July 1977 to June 2005, only a length-of-month adjustment has been applied to this component. From July 2005 seasonal adjustment has been introduced as an ongoing improvement.

- (c) In using these seasonally adjusted series, care should be exercised because of the difficulties associated with reliably estimating the seasonal pattern.
- (d) This component is not seasonally adjusted.

## GOODS DEBITS(a), Seasonally Adjusted

|   | Jul<br>2011    | Aug<br>2011    | Sep<br>2011    | Oct<br>2011    | Nov<br>2011    | Dec<br>2011    | Jan<br>2012    | Feb<br>2012    | Mar<br>2012    | Apr<br>2012    |
|---|----------------|----------------|----------------|----------------|----------------|----------------|----------------|----------------|----------------|----------------|
|   | \$m            | \$m            | \$m            | \$m            | \$m            | \$m            | \$m            | \$m            | \$m            | \$m            |
| <b>Total goods debits</b>                       | <b>-19 796</b> | <b>-20 547</b> | <b>-20 252</b> | <b>-20 847</b> | <b>-20 982</b> | <b>-21 200</b> | <b>-20 994</b> | <b>-20 064</b> | <b>-21 245</b> | <b>-20 915</b> |
| General merchandise                             | -19 253        | -19 998        | -19 664        | -19 950        | -20 300        | -20 702        | -20 468        | -19 528        | -20 799        | -20 512        |
| Consumption goods                               | -5 379         | -5 529         | -5 368         | -5 446         | -5 353         | -5 594         | -5 749         | -5 318         | -5 653         | -5 728         |
| Food and beverages, mainly for consumption      | -756           | -807           | -799           | -813           | -837           | -816           | -837           | -812           | -768           | -825           |
| Household electrical items                      | -333           | -446           | -374           | -370           | -354           | -382           | -394           | -328           | -402           | -408           |
| Non-industrial transport equipment              | -1 492         | -1 353         | -1 285         | -1 400         | -1 203         | -1 462         | -1 518         | -1 591         | -1 451         | -1 631         |
| Textiles, clothing and footwear                 | -658           | -746           | -730           | -729           | -713           | -721           | -743           | -620           | -749           | -761           |
| Toys, books and leisure goods                   | -347           | -363           | -369           | -363           | -371           | -372           | -396           | -358           | -345           | -340           |
| Consumption goods n.e.s.                        | -1 793         | -1 814         | -1 810         | -1 771         | -1 874         | -1 841         | -1 860         | -1 608         | -1 938         | -1 763         |
| Capital goods                                   | -5 191         | -5 190         | -5 403         | -5 498         | -5 820         | -5 759         | -5 838         | -5 617         | -5 697         | -5 800         |
| Machinery and industrial equipment              | -1 518         | -1 581         | -1 557         | -1 548         | -1 577         | -1 638         | -1 869         | -1 657         | -1 701         | -1 823         |
| ADP equipment                                   | -668           | -668           | -673           | -708           | -735           | -639           | -656           | -620           | -660           | -627           |
| Telecommunications equipment                    | -653           | -619           | -524           | -802           | -604           | -690           | -704           | -623           | -606           | -599           |
| Civil aircraft and confidentialised items(b)(c) | -335           | -338           | -664           | -344           | -919           | -791           | -324           | -453           | -402           | -466           |
| Industrial transport equipment n.e.s.(d)        | -662           | -644           | -688           | -690           | -635           | -637           | -750           | -771           | -808           | -885           |
| Capital goods n.e.s.                            | -1 355         | -1 340         | -1 296         | -1 406         | -1 349         | -1 364         | -1 534         | -1 493         | -1 520         | -1 400         |
| Intermediate and other merchandise goods        | -8 683         | -9 278         | -8 894         | -9 006         | -9 127         | -9 350         | -8 881         | -8 594         | -9 449         | -8 984         |
| Food and beverages, mainly for industry         | -90            | -85            | -114           | -117           | -106           | -109           | -120           | -117           | -108           | -99            |
| Primary industrial supplies n.e.s.(d)           | -174           | -139           | -131           | -165           | -166           | -110           | -139           | -135           | -103           | -199           |
| Fuels and lubricants(c)                         | -2 920         | -3 218         | -2 864         | -3 115         | -3 065         | -3 629         | -3 013         | -3 031         | -3 769         | -3 068         |
| Parts for transport equipment                   | -840           | -844           | -789           | -794           | -842           | -859           | -840           | -798           | -855           | -892           |
| Parts for ADP equipment                         | -56            | -68            | -68            | -65            | -59            | -55            | -57            | -53            | -50            | -55            |
| Other parts for capital goods                   | -1 169         | -1 173         | -1 152         | -1 169         | -1 113         | -1 120         | -1 143         | -1 157         | -1 179         | -1 182         |
| Organic and inorganic chemicals                 | -364           | -344           | -507           | -335           | -435           | -326           | -371           | -328           | -366           | -374           |
| Paper and paperboard                            | -188           | -190           | -182           | -179           | -178           | -171           | -175           | -178           | -175           | -183           |
| Textile yarn and fabrics                        | -92            | -94            | -94            | -93            | -94            | -93            | -96            | -88            | -87            | -88            |
| Iron and steel                                  | -283           | -303           | -288           | -286           | -312           | -307           | -398           | -312           | -330           | -340           |
| Plastics  | -235           | -253           | -255           | -260           | -264           | -261           | -256           | -253           | -245           | -247           |
| Processed industrial supplies n.e.s.            | -2 044         | -2 330         | -2 019         | -2 029         | -2 241         | -1 988         | -1 985         | -1 920         | -1 908         | -2 027         |
| Other merchandise goods(b)(d)(e)                | -67            | -75            | -268           | -233           | -85            | -156           | -119           | -57            | -109           | -60            |
| Goods procured in ports by carriers(c)          | -161           | -161           | -162           | -166           | -166           | -165           | -168           | -168           | -166           | -170           |
| Non-monetary gold(c)                            | -543           | -549           | -588           | -897           | -682           | -498           | -526           | -536           | -446           | -403           |

(a) For sign conventions, see paragraph 15 of the Explanatory Notes.

(b) From July 2008, commodities subject to a 'no commodity details' or 'no value details' restriction are included in Civil aircraft and confidentialised items. For earlier periods, commodities subject to a 'no commodity details' or 'no value details' restriction are included in Other merchandise goods.

(c) This component is not seasonally adjusted.

(d) In using these seasonally adjusted series, care should be exercised because of the difficulties associated with reliably estimating the seasonal pattern.

(e) From July 1981, this component is not seasonally adjusted.

## GOODS CREDITS(a), Trend Estimates

|   | Jul<br>2011   | Aug<br>2011   | Sep<br>2011   | Oct<br>2011   | Nov<br>2011   | Dec<br>2011   | Jan<br>2012   | Feb<br>2012   | Mar<br>2012   | Apr<br>2012   |
|---|---------------|---------------|---------------|---------------|---------------|---------------|---------------|---------------|---------------|---------------|
|   | \$m           | \$m           | \$m           | \$m           | \$m           | \$m           | \$m           | \$m           | \$m           | \$m           |
| <b>Total goods credits</b>                  | <b>22 616</b> | <b>22 852</b> | <b>22 939</b> | <b>22 805</b> | <b>22 444</b> | <b>21 977</b> | <b>21 537</b> | <b>21 216</b> | <b>21 021</b> | <b>20 911</b> |
| General merchandise                         | 21 336        | 21 512        | 21 546        | 21 374        | 21 013        | 20 581        | 20 187        | 19 904        | 19 737        | 19 651        |
| <i>Rural goods</i>                          | 2 891         | 2 947         | 2 985         | 2 987         | 2 951         | 2 890         | 2 824         | 2 771         | 2 737         | 2 716         |
| Meat and meat preparations                  | 592           | 600           | 606           | 608           | 603           | 595           | 587           | 580           | 575           | 572           |
| Cereal grains and cereal preparations       | 709           | 735           | 766           | 790           | 799           | 791           | 769           | 744           | 722           | 705           |
| Wool and sheepskins                         | 285           | 285           | 283           | 279           | 271           | 264           | 258           | 255           | 255           | 253           |
| Other rural(b)                              | 1 305         | 1 327         | 1 330         | 1 311         | 1 278         | 1 241         | 1 210         | 1 191         | 1 185         | 1 186         |
| <i>Non-rural goods</i>                      | 18 445        | 18 566        | 18 561        | 18 387        | 18 062        | 17 691        | 17 363        | 17 133        | 17 000        | 16 935        |
| Metal ores and minerals                     | 7 594         | 7 661         | 7 624         | 7 470         | 7 215         | 6 945         | 6 732         | 6 605         | 6 550         | 6 555         |
| Coal, coke and briquettes                   | 4 222         | 4 292         | 4 322         | 4 296         | 4 225         | 4 130         | 4 022         | 3 916         | 3 827         | 3 748         |
| Other mineral fuels                         | 2 080         | 2 069         | 2 073         | 2 091         | 2 114         | 2 134         | 2 145         | 2 158         | 2 173         | 2 181         |
| Metals (excl. non-monetary gold)            | 1 018         | 1 011         | 1 009         | 1 001         | 985           | 964           | 945           | 930           | 918           | 909           |
| Machinery                                   | 712           | 720           | 728           | 735           | 737           | 736           | 734           | 730           | 727           | 723           |
| Transport equipment                         | 336           | 322           | 314           | 319           | 336           | 356           | 374           | 384           | 388           | 388           |
| Other manufactures                          | 1 390         | 1 397         | 1 402         | 1 397         | 1 388         | 1 381         | 1 383         | 1 391         | 1 403         | 1 420         |
| Other non-rural (incl. sugar and beverages) | 955           | 957           | 954           | 944           | 927           | 907           | 891           | 879           | 873           | 867           |
| Goods procured in ports by carriers         | 138           | 136           | 135           | 135           | 135           | 136           | 138           | 140           | 142           | 144           |
| Net exports of goods under merchanting      | -1            | 3             | 11            | 19            | 26            | 30            | 32            | 32            | 32            | 30            |
| Non-monetary gold                           | 1 281         | 1 336         | 1 382         | 1 412         | 1 405         | 1 365         | 1 319         | 1 281         | 1 252         | 1 230         |

(a) Caution should be used when interpreting recent trend estimates as they may be affected by unusual economic factors. For more details on trend estimates, please see paragraph 19 of the Explanatory Notes.

(b) For all time periods, estimates for sugar, sugar preparations and honey are included in Other non-rural.

## GOODS DEBITS(a)(b), Trend Estimates

|  | Jul<br>2011    | Aug<br>2011    | Sep<br>2011    | Oct<br>2011    | Nov<br>2011    | Dec<br>2011    | Jan<br>2012    | Feb<br>2012    | Mar<br>2012    | Apr<br>2012    |
|--|----------------|----------------|----------------|----------------|----------------|----------------|----------------|----------------|----------------|----------------|
|  | \$m            | \$m            | \$m            | \$m            | \$m            | \$m            | \$m            | \$m            | \$m            | \$m            |
| <b>Total goods debits</b>                    | <b>-19 972</b> | <b>-20 218</b> | <b>-20 488</b> | <b>-20 709</b> | <b>-20 839</b> | <b>-20 883</b> | <b>-20 883</b> | <b>-20 872</b> | <b>-20 871</b> | <b>-20 839</b> |
| General merchandise                          | -19 454        | -19 628        | -19 841        | -20 036        | -20 181        | -20 272        | -20 330        | -20 374        | -20 420        | -20 434        |
| Consumption goods                            | -5 397         | -5 410         | -5 428         | -5 450         | -5 478         | -5 509         | -5 545         | -5 583         | -5 620         | -5 650         |
| Food and beverages, mainly for consumption   | -780           | -791           | -804           | -816           | -822           | -822           | -818           | -813           | -808           | -803           |
| Household electrical items                   | -385           | -384           | -381           | -377           | -373           | -371           | -372           | -377           | -384           | -391           |
| Non-industrial transport equipment           | -1 367         | -1 354         | -1 345         | -1 347         | -1 369         | -1 412         | -1 467         | -1 516         | -1 558         | -1 588         |
| Textiles, clothing and footwear              | -722           | -723           | -724           | -722           | -718           | -714           | -711           | -712           | -718           | -725           |
| Toys, books and leisure goods                | -352           | -358           | -364           | -370           | -374           | -373           | -369           | -363           | -356           | -349           |
| Consumption goods n.e.s.                     | -1 790         | -1 800         | -1 810         | -1 819         | -1 822         | -1 817         | -1 809         | -1 802         | -1 796         | -1 792         |
| Capital goods                                | -5 060         | -5 229         | -5 409         | -5 564         | -5 671         | -5 724         | -5 749         | -5 756         | -5 755         | -5 750         |
| Machinery and industrial equipment           | -1 483         | -1 519         | -1 557         | -1 592         | -1 626         | -1 662         | -1 699         | -1 732         | -1 760         | -1 782         |
| ADP equipment                                | -671           | -680           | -688           | -690           | -685           | -673           | -659           | -646           | -636           | -627           |
| Telecommunications equipment                 | -601           | -624           | -646           | -662           | -671           | -670           | -661           | -645           | -628           | -602           |
| Civil aircraft and confidentialised items(c) | -393           | -443           | -519           | -587           | -621           | -602           | -552           | -494           | -442           | -412           |
| Industrial transport equipment n.e.s.        | -619           | -642           | -657           | -665           | -674           | -694           | -726           | -766           | -806           | -843           |
| Capital goods n.e.s.(d)                      | -1 292         | -1 320         | -1 343         | -1 367         | -1 394         | -1 423         | -1 452         | -1 472         | -1 483         | -1 483         |
| Intermediate and other merchandise goods     | -8 998         | -8 990         | -9 004         | -9 022         | -9 032         | -9 038         | -9 036         | -9 035         | -9 044         | -9 035         |
| Food and beverages, mainly for industry      | -102           | -101           | -103           | -107           | -112           | -114           | -113           | -112           | -110           | -107           |
| Primary industrial supplies n.e.s.           | -165           | -158           | -152           | -145           | -140           | -137           | -136           | -137           | -141           | -146           |
| Fuels and lubricants                         | -3 124         | -3 081         | -3 074         | -3 105         | -3 154         | -3 211         | -3 256         | -3 285         | -3 306         | -3 303         |
| Parts for transport equipment                | -821           | -822           | -822           | -823           | -824           | -829           | -837           | -845           | -854           | -861           |
| Parts for ADP equipment                      | -65            | -64            | -64            | -63            | -60            | -58            | -55            | -53            | -52            | -52            |
| Other parts for capital goods                | -1 193         | -1 176         | -1 158         | -1 142         | -1 135         | -1 137         | -1 144         | -1 154         | -1 165         | -1 175         |
| Organic and inorganic chemicals              | -375           | -388           | -396           | -396           | -385           | -372           | -361           | -355           | -352           | -359           |
| Paper and paperboard                         | -187           | -186           | -184           | -180           | -177           | -176           | -176           | -176           | -177           | -179           |
| Textile yarn and fabrics                     | -95            | -94            | -94            | -94            | -94            | -93            | -92            | -90            | -89            | -88            |
| Iron and steel                               | -305           | -298           | -296           | -301           | -312           | -324           | -333           | -338           | -341           | -343           |
| Plastics                                     | -249           | -251           | -254           | -258           | -260           | -259           | -256           | -253           | -250           | -247           |
| Processed industrial supplies n.e.s.         | -2 070         | -2 112         | -2 132         | -2 118         | -2 079         | -2 035         | -1 997         | -1 971         | -1 955         | -1 941         |
| Other merchandise goods(c)                   | -86            | -98            | -113           | -127           | -132           | -128           | -114           | -99            | -84            | -67            |
| Goods procured in ports by carriers          | -160           | -162           | -163           | -164           | -166           | -166           | -167           | -168           | -168           | -168           |
| Non-monetary gold                            | -518           | -589           | -647           | -674           | -658           | -611           | -553           | -498           | -452           | -405           |

(a) For sign conventions, see paragraph 15 of the Explanatory Notes.

(b) Caution should be used when interpreting recent trend estimates as they may be affected by unusual economic factors. For more details on trend estimates, please see paragraph 19 of the Explanatory Notes.

(c) From July 2008, commodities subject to a 'no commodity details' or 'no value details' restriction are included in Civil aircraft and confidentialised items. For earlier periods, commodities subject to a 'no commodity details' or 'no value details' restriction are included in Other merchandise goods.

(d) A trend break of \$300m has been applied to Capital goods debits and related aggregates in July 2011. This trend break will be re-assessed in a future issue.

|   |                |                |                |               |               |               | 10 MONTHS<br>ENDED APRIL |                | Change      |
|---|----------------|----------------|----------------|---------------|---------------|---------------|--------------------------|----------------|-------------|
|   | 2008–09        | 2009–10        | 2010–11        | Feb<br>2012   | Mar<br>2012   | Apr<br>2012   | 2011                     | 2012           |             |
|   | \$m            | \$m            | \$m            | \$m           | \$m           | \$m           | \$m                      | \$m            | %           |
| <b>Services credits</b>                                   | <b>52 948</b>  | <b>52 011</b>  | <b>50 859</b>  | <b>4 170</b>  | <b>4 358</b>  | <b>4 411</b>  | <b>42 722</b>            | <b>42 221</b>  | <b>-1.2</b> |
| Manufacturing services on physical inputs owned by others | 45             | 48             | 33             | 2             | 2             | 4             | 28                       | 19             | -32.1       |
| Maintenance and repair services n.i.e.                    | 86             | 57             | 49             | 3             | 3             | 4             | 43                       | 36             | -16.3       |
| Transport   | 7 342          | 6 189          | 6 330          | 507           | 509           | 476           | 5 395                    | 5 269          | -2.3        |
| Passenger(c)  | 3 410          | 2 610          | 2 714          | 235           | 232           | 193           | 2 373                    | 2 283          | -3.8        |
| Freight   | 851            | 436            | 394            | 32            | 35            | 34            | 328                      | 329            | 0.3         |
| Other   | 2 127          | 2 188          | 2 253          | 171           | 173           | 175           | 1 888                    | 1 833          | -2.9        |
| Postal and courier services(d)                            | 954            | 955            | 969            | 69            | 69            | 74            | 806                      | 824            | 2.2         |
| Travel  | 31 086         | 32 918         | 31 230         | 2 621         | 2 808         | 2 795         | 26 361                   | 25 924         | -1.7        |
| Other services  | 14 389         | 12 799         | 13 217         | 1 037         | 1 036         | 1 132         | 10 895                   | 10 973         | 0.7         |
| <b>Services debits</b>                                    | <b>-56 328</b> | <b>-53 388</b> | <b>-57 163</b> | <b>-4 504</b> | <b>-4 984</b> | <b>-5 285</b> | <b>-47 675</b>           | <b>-51 452</b> | <b>-7.9</b> |
| Manufacturing services on physical inputs owned by others | —              | —              | -1             | —             | —             | —             | —                        | —              | na          |
| Maintenance and repair services n.i.e.                    | -193           | -294           | -342           | -19           | -40           | -23           | -218                     | -292           | -33.9       |
| Transport   | -15 832        | -13 727        | -14 750        | -1 236        | -1 429        | -1 350        | -12 300                  | -13 471        | -9.5        |
| Passenger(c)  | -5 835         | -5 118         | -6 103         | -518          | -615          | -583          | -5 050                   | -5 660         | -12.1       |
| Freight   | -9 388         | -8 142         | -8 245         | -683          | -777          | -729          | -6 907                   | -7 425         | -7.5        |
| Other   | -437           | -309           | -288           | -31           | -32           | -30           | -240                     | -293           | -22.1       |
| Postal and courier services(d)                            | -172           | -158           | -114           | -4            | -5            | -8            | -103                     | -93            | 9.7         |
| Travel  | -22 082        | -23 285        | -25 217        | -1 776        | -2 030        | -2 318        | -21 054                  | -22 603        | -7.4        |
| Other services  | -18 221        | -16 082        | -16 853        | -1 473        | -1 485        | -1 594        | -14 103                  | -15 086        | -7.0        |
| <b>Memorandum items:</b>                                  |                |                |                |               |               |               |                          |                |             |
| Tourism related service credits(e)                        | 34 496         | 35 528         | 33 944         | 2 856         | 3 040         | 2 988         | 28 734                   | 28 207         | -1.8        |
| Tourism related service debits(e)                         | -27 917        | -28 403        | -31 320        | -2 294        | -2 645        | -2 901        | -26 104                  | -28 263        | -8.3        |

— nil or rounded to zero (including null cells)

na not available

(a) For sign conventions, see paragraph 15 of the Explanatory Notes.

(b) For more detailed trade in services components, see table 11.

(c) Passenger services includes agency fees and commissions for air transport.

(d) Postal and courier services includes indirect commissions for sea transport.

(e) For a more detailed explanation of tourism related services, see paragraph 27 of the Explanatory Notes.



|  | Jul<br>2011   | Aug<br>2011   | Sep<br>2011   | Oct<br>2011   | Nov<br>2011   | Dec<br>2011   | Jan<br>2012   | Feb<br>2012   | Mar<br>2012   | Apr<br>2012   |
|--|---------------|---------------|---------------|---------------|---------------|---------------|---------------|---------------|---------------|---------------|
|  | \$m           | \$m           | \$m           | \$m           | \$m           | \$m           | \$m           | \$m           | \$m           | \$m           |
| SEASONALLY ADJUSTED  |               |               |               |               |               |               |               |               |               |               |
| <b>Services credits</b>                                      | <b>4 210</b>  | <b>4 200</b>  | <b>4 149</b>  | <b>4 185</b>  | <b>4 173</b>  | <b>4 177</b>  | <b>4 194</b>  | <b>4 052</b>  | <b>4 239</b>  | <b>4 269</b>  |
| Manufacturing services on physical inputs owned by others(b) | 4             | 2             | 1             | —             | 2             | 2             | —             | 2             | 2             | 4             |
| Maintenance and repair services n.i.e.(b)                    | 4             | 6             | 4             | 3             | 3             | 3             | 3             | 3             | 3             | 4             |
| Transport  | 522           | 519           | 520           | 523           | 515           | 515           | 516           | 507           | 507           | 506           |
| Passenger(c)   | 218           | 215           | 217           | 223           | 220           | 223           | 224           | 215           | 215           | 214           |
| Freight(d)   | 33            | 32            | 31            | 36            | 36            | 35            | 35            | 34            | 34            | 33            |
| Other  | 187           | 187           | 187           | 184           | 181           | 180           | 178           | 179           | 181           | 180           |
| Postal and courier services(e)                               | 85            | 85            | 86            | 81            | 79            | 78            | 79            | 79            | 77            | 80            |
| Travel   | 2 559         | 2 557         | 2 514         | 2 558         | 2 551         | 2 559         | 2 579         | 2 439         | 2 624         | 2 659         |
| Other services   | 1 120         | 1 116         | 1 110         | 1 101         | 1 102         | 1 097         | 1 097         | 1 101         | 1 103         | 1 095         |
| <b>Services debits</b>                                       | <b>-4 999</b> | <b>-5 076</b> | <b>-4 991</b> | <b>-5 023</b> | <b>-5 040</b> | <b>-5 068</b> | <b>-5 168</b> | <b>-5 138</b> | <b>-5 281</b> | <b>-5 370</b> |
| Manufacturing services on physical inputs owned by others(b) | —             | —             | —             | —             | —             | —             | —             | —             | —             | —             |
| Maintenance and repair services n.i.e.(b)                    | -17           | -36           | -26           | -20           | -34           | -53           | -24           | -19           | -40           | -23           |
| Transport  | -1 297        | -1 340        | -1 264        | -1 310        | -1 296        | -1 328        | -1 389        | -1 336        | -1 413        | -1 444        |
| Passenger(c)   | -550          | -542          | -508          | -567          | -553          | -571          | -582          | -585          | -595          | -616          |
| Freight  | -709          | -760          | -719          | -707          | -706          | -721          | -770          | -715          | -779          | -788          |
| Other(b)   | -26           | -26           | -27           | -30           | -30           | -30           | -31           | -31           | -32           | -30           |
| Postal and courier services(e)(d)                            | -12           | -11           | -11           | -6            | -6            | -6            | -6            | -6            | -6            | -9            |
| Travel   | -2 186        | -2 182        | -2 188        | -2 208        | -2 224        | -2 205        | -2 240        | -2 269        | -2 308        | -2 326        |
| Other services   | -1 499        | -1 518        | -1 512        | -1 484        | -1 487        | -1 482        | -1 515        | -1 514        | -1 520        | -1 577        |
| <b>Memorandum items:</b>                                     |               |               |               |               |               |               |               |               |               |               |
| Tourism related service credits(f)                           | 2 777         | 2 772         | 2 731         | 2 781         | 2 771         | 2 782         | 2 803         | 2 654         | 2 839         | 2 873         |
| Tourism related service debits(f)                            | -2 736        | -2 724        | -2 696        | -2 775        | -2 777        | -2 776        | -2 823        | -2 853        | -2 904        | -2 942        |

## TREND ESTIMATES

|   |               |               |               |               |               |               |               |               |               |               |
|---|---------------|---------------|---------------|---------------|---------------|---------------|---------------|---------------|---------------|---------------|
| <b>Services credits</b>                                   | <b>4 200</b>  | <b>4 196</b>  | <b>4 185</b>  | <b>4 172</b>  | <b>4 165</b>  | <b>4 163</b>  | <b>4 167</b>  | <b>4 177</b>  | <b>4 193</b>  | <b>4 208</b>  |
| Manufacturing services on physical inputs owned by others | 2             | 2             | 2             | 1             | 1             | 1             | 1             | 2             | 2             | 3             |
| Maintenance and repair services n.i.e.                    | 4             | 4             | 4             | 4             | 3             | 3             | 3             | 3             | 3             | 3             |
| Transport   | 521           | 521           | 520           | 519           | 518           | 515           | 513           | 510           | 508           | 506           |
| Passenger(c)  | 216           | 217           | 218           | 220           | 221           | 221           | 220           | 218           | 217           | 215           |
| Freight   | 31            | 32            | 33            | 34            | 35            | 35            | 35            | 34            | 34            | 33            |
| Other   | 187           | 187           | 185           | 183           | 182           | 180           | 180           | 179           | 179           | 179           |
| Postal and courier services(e)                            | 87            | 86            | 84            | 82            | 80            | 79            | 78            | 78            | 78            | 78            |
| Travel  | 2 551         | 2 552         | 2 549         | 2 543         | 2 542         | 2 544         | 2 551         | 2 564         | 2 581         | 2 598         |
| Other services  | 1 122         | 1 116         | 1 110         | 1 105         | 1 101         | 1 100         | 1 099         | 1 098         | 1 098         | 1 098         |
| <b>Services debits</b>                                    | <b>-4 952</b> | <b>-4 995</b> | <b>-5 022</b> | <b>-5 037</b> | <b>-5 057</b> | <b>-5 090</b> | <b>-5 139</b> | <b>-5 197</b> | <b>-5 255</b> | <b>-5 305</b> |
| Manufacturing services on physical inputs owned by others | —             | —             | —             | —             | —             | —             | —             | —             | —             | —             |
| Maintenance and repair services n.i.e.                    | -38           | -34           | -30           | -30           | -31           | -32           | -32           | -31           | -30           | -28           |
| Transport   | -1 282        | -1 293        | -1 301        | -1 307        | -1 316        | -1 332        | -1 354        | -1 378        | -1 401        | -1 420        |
| Passenger(c)  | -530          | -535          | -541          | -549          | -558          | -568          | -579          | -590          | -599          | -605          |
| Freight   | -716          | -722          | -723          | -721          | -722          | -727          | -738          | -751          | -764          | -776          |
| Other   | -25           | -27           | -28           | -29           | -30           | -30           | -31           | -31           | -31           | -31           |
| Postal and courier services(e)                            | -9            | -10           | -9            | -8            | -7            | -6            | -6            | -6            | -7            | -7            |
| Travel  | -2 183        | -2 190        | -2 194        | -2 199        | -2 212        | -2 228        | -2 248        | -2 270        | -2 292        | -2 311        |
| Other services  | -1 449        | -1 478        | -1 497        | -1 502        | -1 498        | -1 498        | -1 505        | -1 518        | -1 532        | -1 546        |
| <b>Memorandum items:</b>                                  |               |               |               |               |               |               |               |               |               |               |
| Tourism related service credits(f)                        | 2 767         | 2 769         | 2 768         | 2 763         | 2 763         | 2 765         | 2 771         | 2 782         | 2 798         | 2 813         |
| Tourism related service debits(f)                         | -2 713        | -2 726        | -2 735        | -2 748        | -2 770        | -2 796        | -2 827        | -2 860        | -2 891        | -2 916        |

— nil or rounded to zero (including null cells)

(a) For sign conventions, see paragraph 15 of the Explanatory Notes.

(b) This component is not seasonally adjusted.

(c) Passenger services includes agency fees and commissions for air transport.

(d) In using these seasonally adjusted series, care should be exercised because of the difficulties associated with reliably estimating the seasonal pattern.

(e) Postal and courier services includes indirect commissions for sea transport.

(f) For a more detailed explanation of tourism related services, see paragraph 27 of the Explanatory Notes.

|  | CREDITS       |               |               |               | DEBITS         |                |                |                |
|--|---------------|---------------|---------------|---------------|----------------|----------------|----------------|----------------|
|  | Jun Qtr       | Sep Qtr       | Dec Qtr       | Mar Qtr       | Jun Qtr        | Sep Qtr        | Dec Qtr        | Mar Qtr        |
|  | 2011          | 2011          | 2011          | 2012          | 2011           | 2011           | 2011           | 2012           |
|  | \$m           | \$m           | \$m           | \$m           | \$m            | \$m            | \$m            | \$m            |
| <b>Services</b>  | <b>12 452</b> | <b>12 554</b> | <b>12 747</b> | <b>12 509</b> | <b>-14 184</b> | <b>-15 797</b> | <b>-15 482</b> | <b>-14 888</b> |
| Manufacturing services on physical inputs owned by others                                  | 8             | 7             | 4             | 4             | -1             | —              | —              | —              |
| Maintenance and repair services n.i.e.   | 9             | 14            | 9             | 9             | -153           | -79            | -107           | -83            |
| Transport  | 1 433         | 1 610         | 1 603         | 1 580         | -3 598         | -4 070         | -4 100         | -3 951         |
| Passenger(b)   | 544           | 617           | 714           | 759           | -1 549         | -1 688         | -1 728         | -1 661         |
| Freight  | 98            | 94            | 102           | 99            | -1 961         | -2 243         | -2 270         | -2 183         |
| Other  | 547           | 578           | 565           | 515           | -71            | -79            | -90            | -94            |
| Postal and courier services(c)   | 244           | 321           | 222           | 207           | -17            | -60            | -12            | -13            |
| Travel   | 7 519         | 7 639         | 7 683         | 7 807         | -6 328         | -7 177         | -6 686         | -6 422         |
| Business   | 862           | 908           | 891           | 960           | -682           | -837           | -779           | -916           |
| Personal   | 6 657         | 6 731         | 6 792         | 6 847         | -5 646         | -6 340         | -5 907         | -5 506         |
| Education-related  | 4 092         | 3 997         | 3 454         | 3 566         | -182           | -314           | -188           | -283           |
| Other(d)   | 2 565         | 2 734         | 3 338         | 3 281         | -5 464         | -6 026         | -5 719         | -5 223         |
| Construction   | 10            | 29            | 15            | 12            | —              | —              | —              | —              |
| Insurance and pension services   | 110           | 111           | 104           | 88            | -147           | -147           | -143           | -152           |
| Financial services   | 307           | 380           | 394           | 337           | -148           | -225           | -333           | -327           |
| Charges for the use of intellectual property n.i.e.  | 293           | 198           | 206           | 223           | -983           | -1 015         | -989           | -993           |
| Telecommunications, computer and information services                                      | 413           | 418           | 428           | 371           | -467           | -501           | -449           | -420           |
| Telecommunication services   | 33            | 33            | 37            | 34            | -70            | -74            | -67            | -77            |
| Computer and information services  | 380           | 385           | 391           | 337           | -397           | -427           | -382           | -343           |
| Computer services  | 316           | 319           | 330           | 281           | -326           | -370           | -324           | -288           |
| Information services   | 15            | 14            | 17            | 13            | -19            | -14            | -15            | -12            |
| Other services   | 49            | 52            | 44            | 43            | -52            | -43            | -43            | -43            |
| Other business services  | 1 947         | 1 720         | 1 900         | 1 652         | -1 778         | -2 002         | -2 031         | -1 862         |
| Research and development services  | 129           | 122           | 152           | 112           | -71            | -41            | -53            | -43            |
| Professional and management consulting services  | 791           | 807           | 905           | 769           | -636           | -650           | -741           | -678           |
| Legal, accounting, management consulting, public relations and other professional services | 710           | 713           | 783           | 666           | -585           | -626           | -703           | -639           |
| Advertising, market research and public opinion polling                                    | 81            | 94            | 122           | 103           | -51            | -24            | -38            | -39            |
| Technical, trade-related and other business services                                       | 1 027         | 791           | 843           | 771           | -1 071         | -1 311         | -1 237         | -1 141         |
| Architectural, engineering and other technical services                                    | 562           | 458           | 469           | 447           | -563           | -684           | -693           | -671           |
| Waste treatment and de-pollution, agricultural and mining services                         | 56            | 21            | 23            | 20            | -120           | -153           | -135           | -90            |
| Operational leasing services   | 57            | 61            | 64            | 64            | -139           | -157           | -149           | -138           |
| Trade-related commission services  | 232           | 162           | 186           | 139           | -87            | -62            | -50            | -49            |
| Other business services n.i.e.   | 120           | 89            | 101           | 101           | -162           | -255           | -210           | -193           |
| Personal, cultural and recreational services   | 187           | 218           | 191           | 210           | -359           | -359           | -422           | -456           |
| Audiovisual and related services   | 32            | 58            | 42            | 75            | -303           | -312           | -340           | -376           |
| Other personal, cultural and recreational services   | 155           | 160           | 149           | 135           | -56            | -47            | -82            | -80            |
| Government goods and services n.i.e.   | 216           | 210           | 210           | 216           | -222           | -222           | -222           | -222           |
| <b>Memorandum items:</b>   |               |               |               |               |                |                |                |                |
| Gross insurance premiums receivable / payable  | 282           | 284           | 278           | 258           | -289           | -299           | -297           | -337           |
| Gross insurance claims payable / receivable  | -190          | -191          | -188          | -178          | 193            | 199            | 203            | 232            |
| Tourism related services(e)  | 8 063         | 8 256         | 8 397         | 8 566         | -7 877         | -8 865         | -8 414         | -8 083         |

— nil or rounded to zero (including null cells)

(a) For sign conventions, see paragraph 15 of the Explanatory Notes.

(b) Passenger services includes agency fees and commissions for air transport.

(c) Postal and courier services includes indirect commissions for sea transport.

(d) Other personal travel includes health-related travel.

(e) For a more detailed explanation of tourism related services, see paragraph 27 of the Explanatory Notes.

|  |              |              |              |  | 10 MONTHS<br>ENDED APRIL |               |
|--|--------------|--------------|--------------|--|--------------------------|---------------|
|  |              |              |              |  | 2011                     | 2012          |
|  |              |              |              |  | .....                    |               |
|  | Feb<br>2012  | Mar<br>2012  | Apr<br>2012  | Percent<br>of total<br>merchandise<br>exports(b) |                          |               |
|  | \$m          | \$m          | \$m          | %  | \$m                      | \$m           |
| MAJOR COMMODITIES (c)  |              |              |              |  |                          |               |
| 011 Meat of bovine animals   | 360          | 400          | 368          | 1.7  | 3 733                    | 3 847         |
| 041 Wheat and meslin   | 573          | 532          | 619          | 2.9  | 4 450                    | 5 106         |
| 281 Iron ore and concentrates  | 4 604        | 4 467        | 5 347        | 24.8   | 47 190                   | 52 554        |
| 283 Copper ores and concentrates   | 423          | 397          | 490          | 2.3  | 4 243                    | 4 536         |
| 285 Aluminium ores and concentrates  | 423          | 428          | 427          | 2.0  | 4 300                    | 4 434         |
| 287 Ores and concentrates of base metals, n.e.s.   | 227          | 414          | 324          | 1.5  | 3 819                    | 3 442         |
| 321 Coal, not agglomerated   | 3 236        | 3 344        | 3 670        | 17.0   | 35 520                   | 40 914        |
| 333 Crude petroleum oils   | 642          | 1 093        | 731          | 3.4  | 9 226                    | 9 270         |
| 334 Refined petroleum oils   | 231          | 273          | 377          | 1.8  | 2 117                    | 2 670         |
| 343 Natural gas  | 897          | 1 030        | 976          | 4.5  | 8 450                    | 9 828         |
| 542 Medicaments  | 240          | 334          | 330          | 1.5  | 2 776                    | 2 885         |
| 682 Copper   | 277          | 338          | 247          | 1.1  | 3 345                    | 2 977         |
| 684 Aluminium  | 292          | 415          | 297          | 1.4  | 3 793                    | 3 496         |
| 971 Gold, non-monetary   | 1 199        | 1 241        | 1 246        | 5.8  | 11 343                   | 12 725        |
| SECTION AND DIVISION OF THE SITC   |              |              |              |  |                          |               |
| 0 Food and live animals  |              |              |              |  |                          |               |
| 00 Live animals (excl. fish, crustaceans, molluscs and aquatic invertebrates)                                    | 85           | 57           | 131          | 0.6  | 923                      | 917           |
| 01 Meat and meat preparations  | 554          | 602          | 563          | 2.6  | 5 726                    | 5 869         |
| 02 Dairy products and birds' eggs  | 162          | 186          | 178          | 0.8  | 1 885                    | 1 796         |
| 03 Fish (not marine mammals), crustaceans, molluscs and aquatic invertebrates, and preparations thereof          | 71           | 70           | 62           | 0.3  | 847                      | 880           |
| 04 Cereals and cereal preparations   | 782          | 847          | 829          | 3.8  | 5 852                    | 7 356         |
| 05 Vegetables and fruit  | 109          | 138          | 182          | 0.8  | 1 230                    | 1 446         |
| 06 Sugars, sugar preparations and honey  | 24           | 24           | 17           | 0.1  | 273                      | 277           |
| 07 Coffee, tea, cocoa, spices, and manufactures thereof  | 19           | 20           | 16           | 0.1  | 243                      | 231           |
| 08 Feeding stuff for animals (excl. unmilled cereals)  | 86           | 96           | 89           | 0.4  | 869                      | 908           |
| 09 Miscellaneous edible products and preparations  | 68           | 86           | 75           | 0.3  | 666                      | 768           |
| <i>Total Food and live animals</i>   | <i>1 962</i> | <i>2 127</i> | <i>2 142</i> | <i>9.9</i>                                       | <i>18 514</i>            | <i>20 448</i> |
| 1 Beverages and tobacco  |              |              |              |  |                          |               |
| 11 Beverages   | 170          | 152          | 174          | 0.8  | 1 828                    | 1 726         |
| 12 Tobacco and tobacco manufactures  | 4            | 7            | 7            | —  | 109                      | 91            |
| <i>Total Beverages and tobacco</i>   | <i>174</i>   | <i>159</i>   | <i>181</i>   | <i>0.8</i>                                       | <i>1 937</i>             | <i>1 817</i>  |
| 2 Crude materials, inedible, except fuels  |              |              |              |  |                          |               |
| 21 Hides, skins and furskins, raw  | 69           | 70           | 74           | 0.3  | 666                      | 707           |
| 22 Oil-seeds and oleaginous fruits   | 152          | 256          | 174          | 0.8  | 730                      | 1 233         |
| 23 Crude rubber (incl. synthetic and reclaimed)  | 2            | 2            | 1            | —  | 12                       | 17            |
| 24 Cork and wood   | 82           | 94           | 68           | 0.3  | 1 004                    | 849           |
| 25 Pulp and waste paper  | 18           | 18           | 19           | 0.1  | 212                      | 203           |
| 26 Textile fibres and their wastes (not manufactured into yarn or fabric)  | 304          | 369          | 359          | 1.7  | 2 890                    | 4 381         |
| 27 Crude fertilizers (excl. those of Division 56) and crude minerals (excl. coal, petroleum and precious stones) | 35           | 35           | 22           | 0.1  | 310                      | 353           |
| 28 Metalliferous ores and metal scrap  | 6 059        | 6 413        | 7 317        | 34.0   | 64 074                   | 71 074        |
| 29 Crude animal and vegetable materials, n.e.s.  | 21           | 19           | 24           | 0.1  | 174                      | 186           |
| <i>Total Crude materials, inedible, except fuels</i>   | <i>6 742</i> | <i>7 276</i> | <i>8 059</i> | <i>37.4</i>                                      | <i>70 071</i>            | <i>79 003</i> |
| 3 Mineral fuels, lubricants and related materials  |              |              |              |  |                          |               |
| 32 Coal, coke and briquettes   | 3 263        | 3 364        | 3 697        | 17.2   | 35 670                   | 41 153        |
| 33 Petroleum, petroleum products and related materials   | 874          | 1 370        | 1 112        | 5.2  | 11 356                   | 11 951        |
| 34 Gas, natural and manufactured   | 1 029        | 1 085        | 1 121        | 5.2  | 9 345                    | 10 698        |
| <i>Total Mineral fuels, lubricants and related materials</i>   | <i>5 166</i> | <i>5 818</i> | <i>5 930</i> | <i>27.5</i>                                      | <i>56 371</i>            | <i>63 802</i> |

— nil or rounded to zero (including null cells)

(a) Some SITC sections and divisions exclude commodities subject to a confidentiality restriction. These are included in Division 98. For more information see paragraph 26 of the Explanatory Notes.

(b) Percent of total merchandise is calculated for the most recent month.

(c) The 'Major commodities' section lists commodities at the SITC Rev 4 3-digit level which are the most significant (by value) or are of particular interest. Abbreviated descriptors have been used. The list of 'Major commodities' is reviewed annually.

|                                  |   |             |             |  | 10 MONTHS<br>ENDED APRIL<br>..... |        |        |
|----------------------------------|---|-------------|-------------|--|-----------------------------------|--------|--------|
|                                  |   |             |             |  | 2011                              | 2012   |        |
|                                  |   |             |             |  |                                   |        |        |
|                                  | Feb<br>2012   | Mar<br>2012 | Apr<br>2012 | Percent<br>of total<br>merchandise<br>exports(b) |                                   |        |        |
|                                  | \$m   | \$m         | \$m         | %  | \$m                               | \$m    |        |
| .....                            |   |             |             |  |                                   |        |        |
| SECTION AND DIVISION OF THE SITC |   |             |             |  |                                   |        |        |
| 4                                | Animal and vegetable oils, fats and waxes   |             |             |  |                                   |        |        |
| 41                               | Animal oils and fats  | 20          | 36          | 47   | 0.2                               | 300    | 321    |
| 42                               | Fixed vegetable fats and oils, crude, refined or fractionated   | 9           | 17          | 8  | —                                 | 140    | 137    |
| 43                               | Fats and oils (processed), waxes and inedible mixtures or preparations,<br>of animal or vegetable origin, n.e.s.          | 1           | —           | —  | —                                 | 8      | 9      |
|                                  | <i>Total Animal and vegetable oils, fats and waxes</i>  | 30          | 54          | 55   | 0.3                               | 448    | 467    |
| 5                                | Chemicals and related products, n.e.s.  |             |             |  |                                   |        |        |
| 51                               | Organic chemicals   | 12          | 15          | 18   | 0.1                               | 157    | 152    |
| 52                               | Inorganic chemicals   | 65          | 54          | 55   | 0.3                               | 479    | 521    |
| 53                               | Dyeing, tanning and colouring materials   | 67          | 69          | 70   | 0.3                               | 598    | 654    |
| 54                               | Medicinal and pharmaceutical products   | 276         | 360         | 360  | 1.7                               | 3 106  | 3 216  |
| 55                               | Essential oils and resinoids and perfume materials, toilet, polishing and<br>cleansing preparations                       | 50          | 55          | 46   | 0.2                               | 538    | 514    |
| 56                               | Fertilisers (excl. crude)   | 22          | 7           | 7  | —                                 | 280    | 305    |
| 57                               | Plastics in primary forms   | 26          | 29          | 27   | 0.1                               | 294    | 250    |
| 58                               | Plastics in non-primary forms   | 25          | 27          | 21   | 0.1                               | 289    | 260    |
| 59                               | Chemical materials and products, n.e.s.   | 79          | 79          | 79   | 0.4                               | 799    | 797    |
|                                  | <i>Total Chemicals and related products, n.e.s.</i>   | 623         | 695         | 682  | 3.2                               | 6 539  | 6 670  |
| 6                                | Manufactured goods classified chiefly by material   |             |             |  |                                   |        |        |
| 61                               | Leather, leather manufactures and dressed furskins, n.e.s.  | 18          | 15          | 19   | 0.1                               | 226    | 189    |
| 62                               | Rubber manufactures, n.e.s.   | 16          | 20          | 17   | 0.1                               | 163    | 169    |
| 63                               | Cork and wood manufactures (excl. furniture)  | 6           | 9           | 8  | —                                 | 119    | 97     |
| 64                               | Paper, paperboard and articles of paper pulp, of paper or of paperboard   | 68          | 71          | 71   | 0.3                               | 674    | 696    |
| 65                               | Textile yarn, fabrics, made-up articles n.e.s. and related products   | 21          | 20          | 20   | 0.1                               | 218    | 215    |
| 66                               | Non-metallic mineral manufactures, n.e.s.   | 50          | 44          | 39   | 0.2                               | 561    | 533    |
| 67                               | Iron and steel  | 37          | 41          | 54   | 0.3                               | 1 080  | 832    |
| 68                               | Non-ferrous metals  | 700         | 1 007       | 866  | 4.0                               | 9 463  | 8 876  |
| 69                               | Manufactures of metals, n.e.s.  | 85          | 82          | 82   | 0.4                               | 894    | 853    |
|                                  | <i>Total Manufactured goods classified chiefly by material</i>  | 1 003       | 1 310       | 1 176  | 5.5                               | 13 398 | 12 460 |
| 7                                | Machinery and transport equipment   |             |             |  |                                   |        |        |
| 71                               | Power generating machinery and equipment  | 56          | 69          | 66   | 0.3                               | 741    | 740    |
| 72                               | Machinery specialized for particular industries   | 156         | 184         | 138  | 0.6                               | 1 612  | 1 671  |
| 73                               | Metal working machinery   | 13          | 18          | 15   | 0.1                               | 114    | 144    |
| 74                               | General industrial machinery and equipment, n.e.s. and machine parts,<br>n.e.s.   | 149         | 180         | 149  | 0.7                               | 1 540  | 1 546  |
| 75                               | Office machines and automatic data processing machines  | 89          | 97          | 91   | 0.4                               | 992    | 954    |
| 76                               | Telecommunications and sound recording and reproducing apparatus<br>and equipment   | 77          | 79          | 80   | 0.4                               | 798    | 833    |
| 77                               | Electrical machinery, apparatus and appliances, parts (incl. non<br>electrical counterparts of electrical domestic equip) | 140         | 151         | 129  | 0.6                               | 1 247  | 1 383  |
| 78                               | Road vehicles (incl. air-cushion vehicles)  | 272         | 289         | 216  | 1.0                               | 2 260  | 2 231  |
| 79                               | Transport equipment (excl. road vehicles)   | 125         | 115         | 150  | 0.7                               | 891    | 1 264  |
|                                  | <i>Total Machinery and transport equipment</i>  | 1 076       | 1 181       | 1 033  | 4.8                               | 10 195 | 10 766 |

— nil or rounded to zero (including null cells)

(b) Percent of total merchandise is calculated for the most recent month.

(a) Some SITC sections and divisions exclude commodities subject to a confidentiality restriction. These are included in Division 98. For more information see paragraph 26 of the Explanatory Notes.

|  |               |               |               |  | 10 MONTHS<br>ENDED APRIL<br>..... |                |
|--|---------------|---------------|---------------|--|-----------------------------------|----------------|
|  | Feb<br>2012   | Mar<br>2012   | Apr<br>2012   | Percent<br>of total<br>merchandise<br>exports(b) | 2011                              | 2012           |
|  | \$m           | \$m           | \$m           | %  | \$m                               | \$m            |
| SECTION AND DIVISION OF THE SITC   |               |               |               |  |                                   |                |
| 8 Miscellaneous manufactured articles  |               |               |               |  |                                   |                |
| 81 Prefabricated buildings and sanitary, plumbing, heating and lighting<br>fixtures and fittings, n.e.s.             | 9             | 10            | 11            | 0.1  | 102                               | 94             |
| 82 Furniture and parts thereof; bedding, mattresses, mattress supports,<br>cushions and similar stuffed furnishings  | 7             | 8             | 6             | —  | 79                                | 77             |
| 83 Travel goods, handbags and similar containers   | 3             | 3             | 2             | —  | 23                                | 29             |
| 84 Articles of apparel and clothing accessories  | 28            | 27            | 20            | 0.1  | 209                               | 223            |
| 85 Footwear  | 4             | 5             | 3             | —  | 37                                | 44             |
| 87 Professional, scientific and controlling instruments and apparatus, n.e.s.  | 156           | 163           | 154           | 0.7  | 1 599                             | 1 594          |
| 88 Photographic apparatus, equipment and supplies and optical goods,<br>n.e.s., watches and clocks                   | 24            | 21            | 18            | 0.1  | 222                               | 215            |
| 89 Miscellaneous manufactured articles, n.e.s.   | 205           | 235           | 201           | 0.9  | 1 820                             | 2 205          |
| <i>Total Miscellaneous manufactured articles</i>   | <i>435</i>    | <i>472</i>    | <i>415</i>    | <i>1.9</i>                                       | <i>4 091</i>                      | <i>4 481</i>   |
| 9 Commodities and transactions not classified elsewhere in the SITC  |               |               |               |  |                                   |                |
| 93 Special transactions and commodities not classified according to kind   | 109           | 141           | 110           | 0.5  | 1 235                             | 1 019          |
| 95 Gold coin whether or not legal tender, and other coin being legal tender  | 21            | 56            | 26            | 0.1  | 567                               | 746            |
| 96 Coin (excl. gold coin) not being legal tender   | —             | —             | —             | —  | —                                 | —              |
| 97 Gold, non-monetary (excl. gold ores and concentrates)   | 1 199         | 1 241         | 1 246         | 5.8  | 11 343                            | 12 725         |
| 98 Combined confidential items excl. some of SITC 280 (exports only) and<br>some of SITCs 510 and 520 (imports only) | 444           | 410           | 484           | 2.2  | 6 158                             | 5 295          |
| <i>Total Commodities and transactions not classified elsewhere in the SITC</i>                                       | <i>1 773</i>  | <i>1 848</i>  | <i>1 866</i>  | <i>8.7</i>                                       | <i>19 304</i>                     | <i>19 784</i>  |
| <b>Total merchandise exports</b>   | <b>18 983</b> | <b>20 939</b> | <b>21 539</b> | <b>100.0</b>                                     | <b>200 868</b>                    | <b>219 700</b> |
| Balance of Payments Adjustments  | 144           | 66            | -67           | . .  | 1 056                             | 1 012          |
| Goods Credits (exports) on a Balance of Payments Basis   | 19 127        | 21 005        | 21 472        | . .  | 201 924                           | 220 712        |

. . not applicable

— nil or rounded to zero (including null cells)

(a) Some SITC sections and divisions exclude commodities subject to a confidentiality restriction. These are included in Division 98. For more information see paragraph 26 of the Explanatory Notes.

(b) Percent of total merchandise is calculated for the most recent month.

|                                  |   | Feb<br>2012 | Mar<br>2012 | Apr<br>2012 | Percent<br>of total<br>merchandise<br>imports(b) | 10 MONTHS<br>ENDED APRIL<br>..... |        |
|----------------------------------|---|-------------|-------------|-------------|--|-----------------------------------|--------|
|                                  |   | \$m         | \$m         | \$m         | %  | \$m                               | \$m    |
| MAJOR COMMODITIES (c)            |   |             |             |             |  |                                   |        |
| 333                              | Crude petroleum oils  | 1 749       | 1 981       | 1 620       | 8.6  | 15 454                            | 17 252 |
| 334                              | Refined petroleum oils  | 1 174       | 1 648       | 1 279       | 6.8  | 8 898                             | 12 958 |
| 542                              | Medicaments   | 594         | 831         | 564         | 3.0  | 6 843                             | 7 108  |
| 723                              | Civil engineering and contractors' plant and equipment  | 460         | 1 581       | 523         | 2.8  | 2 721                             | 5 605  |
| 752                              | Automatic data processing machines  | 408         | 585         | 517         | 2.7  | 5 210                             | 5 472  |
| 761                              | Televisions, monitors and projectors  | 105         | 119         | 164         | 0.9  | 2 103                             | 1 777  |
| 764                              | Telecommunications equipment  | 564         | 656         | 613         | 3.3  | 6 621                             | 7 265  |
| 781                              | Motor cars for the transport of persons   | 1 361       | 1 391       | 1 451       | 7.7  | 12 217                            | 13 050 |
| 782                              | Motor vehicles for the transport of goods   | 616         | 739         | 702         | 3.7  | 4 648                             | 6 056  |
| 784                              | Parts and accessories of the motor vehicles   | 201         | 233         | 231         | 1.2  | 2 120                             | 2 293  |
| 821                              | Furniture, bedding, mattresses and supports, and stuffed furnishings  | 171         | 200         | 215         | 1.1  | 2 246                             | 2 427  |
| 874                              | Measuring, checking, analysing and controlling instruments and apparatus n.e.s.                               | 216         | 296         | 239         | 1.3  | 2 174                             | 2 324  |
| 971                              | Gold, non-monetary  | 536         | 446         | 403         | 2.1  | 4 542                             | 5 835  |
| SECTION AND DIVISION OF THE SITC |   |             |             |             |  |                                   |        |
| 0                                | Food and live animals   |             |             |             |  |                                   |        |
| 00                               | Live animals other than fish, crustaceans, molluscs and aquatic invertebrates                                 | 22          | 8           | 5           | —  | 110                               | 87     |
| 01                               | Meat and meat preparations  | 50          | 58          | 57          | 0.3  | 455                               | 493    |
| 02                               | Dairy products and birds' eggs  | 49          | 55          | 57          | 0.3  | 551                               | 593    |
| 03                               | Fish (not marine mammals), crustaceans, molluscs and aquatic invertebrates, and preparations thereof          | 101         | 108         | 101         | 0.5  | 1 077                             | 1 158  |
| 04                               | Cereals and cereal preparations   | 57          | 58          | 60          | 0.3  | 657                               | 690    |
| 05                               | Vegetables and fruit  | 146         | 133         | 131         | 0.7  | 1 377                             | 1 617  |
| 06                               | Sugars, sugar preparations and honey  | 38          | 23          | 23          | 0.1  | 303                               | 310    |
| 07                               | Coffee, tea, cocoa, spices, and manufactures thereof  | 110         | 108         | 95          | 0.5  | 1 088                             | 1 169  |
| 08                               | Feeding stuff for animals (excl. unmilled cereals)  | 24          | 43          | 49          | 0.3  | 449                               | 456    |
| 09                               | Miscellaneous edible products and preparations  | 136         | 124         | 132         | 0.7  | 1 364                             | 1 463  |
|                                  | <i>Total Food and live animals</i>  | 735         | 719         | 712         | 3.8  | 7 431                             | 8 036  |
| 1                                | Beverages and tobacco   |             |             |             |  |                                   |        |
| 11                               | Beverages   | 122         | 107         | 125         | 0.7  | 1 267                             | 1 394  |
| 12                               | Tobacco and tobacco manufactures  | 23          | 27          | 22          | 0.1  | 225                               | 219    |
|                                  | <i>Total Beverages and tobacco</i>  | 146         | 134         | 147         | 0.8  | 1 492                             | 1 613  |
| 2                                | Crude materials, inedible, except fuels   |             |             |             |  |                                   |        |
| 21                               | Hides, skins and furskins, raw  | 1           | —           | —           | —  | 1                                 | 2      |
| 22                               | Oil-seeds and oleaginous fruits   | 6           | 4           | 6           | —  | 41                                | 43     |
| 23                               | Crude rubber (incl. synthetic and reclaimed)  | 11          | 11          | 14          | 0.1  | 112                               | 125    |
| 24                               | Cork and wood   | 60          | 57          | 46          | 0.2  | 570                               | 564    |
| 25                               | Pulp and waste paper  | 11          | 12          | 11          | 0.1  | 153                               | 143    |
| 26                               | Textile fibres and their wastes (not manufactured into yarn or fabric)  | 7           | 8           | 7           | —  | 94                                | 83     |
| 27                               | Crude fertilizers (excl. those of Division 56) and crude minerals (excl. coal, petroleum and precious stones) | 20          | 11          | 32          | 0.2  | 187                               | 249    |
| 28                               | Metalliferous ores and metal scrap  | 35          | 49          | 106         | 0.6  | 643                               | 818    |
| 29                               | Crude animal and vegetable materials, n.e.s.  | 30          | 35          | 33          | 0.2  | 271                               | 307    |
|                                  | <i>Total Crude materials, inedible, except fuels</i>  | 180         | 188         | 255         | 1.4  | 2 074                             | 2 336  |
| 3                                | Mineral fuels, lubricants and related materials   |             |             |             |  |                                   |        |
| 32                               | Coal, coke and briquettes   | 1           | 1           | 1           | —  | 53                                | 39     |
| 33                               | Petroleum, petroleum products and related materials   | 3 004       | 3 699       | 2 967       | 15.8   | 24 856                            | 30 853 |
| 34                               | Gas, natural and manufactured   | 203         | 220         | 273         | 1.4  | 1 986                             | 2 378  |
|                                  | <i>Total Mineral fuels, lubricants and related materials</i>  | 3 208       | 3 920       | 3 241       | 17.2   | 26 895                            | 33 270 |

— nil or rounded to zero (including null cells)

(a) Some SITC sections and divisions exclude commodities subject to a confidentiality restriction. These are included in Division 98. For more information see paragraph 26 of the Explanatory Notes.

(b) Percent of total merchandise is calculated for the most recent month.

(c) The 'Major commodities' section lists commodities at the SITC Rev 4 3-digit level which are the most significant (by value) or are of particular interest. Abbreviated descriptors have been used. The list of 'Major commodities' is reviewed annually.

|                                  |  |       |       |       |      | 10 MONTHS<br>ENDED APRIL<br>..... |        |
|----------------------------------|--|-------|-------|-------|------|-----------------------------------|--------|
|                                  |  |       |       |       |      | 2011                              | 2012   |
|                                  |  |       |       |       |      | \$m                               | \$m    |
| SECTION AND DIVISION OF THE SITC |  |       |       |       |      |                                   |        |
| 4                                | Animal and vegetable oils, fats and waxes  |       |       |       |      |                                   |        |
| 41                               | Animal oils and fats   | 2     | 4     | 7     | —    | 30                                | 39     |
| 42                               | Fixed vegetable fats and oils, crude, refined or fractionated  | 33    | 45    | 33    | 0.2  | 378                               | 371    |
| 43                               | Fats and oils (processed), waxes and inedible mixtures or preparations, of animal or vegetable n.e.s.          | 3     | 9     | 6     | —    | 51                                | 55     |
|                                  | <i>Total Animal and vegetable oils, fats and waxes</i>   | 39    | 58    | 45    | 0.2  | 459                               | 465    |
| 5                                | Chemicals and related products, nes  |       |       |       |      |                                   |        |
| 51                               | Organic chemicals  | 219   | 262   | 243   | 1.3  | 2 822                             | 2 445  |
| 52                               | Inorganic chemicals  | 109   | 117   | 128   | 0.7  | 972                               | 1 323  |
| 53                               | Dyeing, tanning and colouring materials  | 47    | 51    | 54    | 0.3  | 538                               | 529    |
| 54                               | Medicinal and pharmaceutical products  | 776   | 1 027 | 756   | 4.0  | 8 348                             | 8 908  |
| 55                               | Essential oils and resinoids and perfume materials; toilet, polishing and cleansing preparations               | 141   | 158   | 151   | 0.8  | 1 580                             | 1 582  |
| 56                               | Fertilisers (excl. crude)  | 168   | 170   | 211   | 1.1  | 1 239                             | 1 406  |
| 57                               | Plastics in primary forms  | 121   | 128   | 126   | 0.7  | 1 207                             | 1 346  |
| 58                               | Plastics in non-primary forms  | 107   | 108   | 106   | 0.6  | 1 194                             | 1 202  |
| 59                               | Chemical materials and products, n.e.s.  | 167   | 191   | 169   | 0.9  | 1 832                             | 1 804  |
|                                  | <i>Total Chemicals and related products, n.e.s.</i>  | 1 854 | 2 212 | 1 944 | 10.3 | 19 731                            | 20 545 |
| 6                                | Manufactured goods classified chiefly by material  |       |       |       |      |                                   |        |
| 61                               | Leather, leather manufactures, and dressed furskins, n.e.s.  | 13    | 12    | 11    | 0.1  | 119                               | 124    |
| 62                               | Rubber manufactures, n.e.s.  | 279   | 340   | 328   | 1.7  | 2 542                             | 3 159  |
| 63                               | Cork and wood manufactures (excl. furniture)   | 65    | 64    | 61    | 0.3  | 617                               | 652    |
| 64                               | Paper, paperboard and articles of paper pulp, of paper or of paperboard  | 194   | 202   | 190   | 1.0  | 2 328                             | 2 147  |
| 65                               | Textile yarn, fabrics, made-up articles n.e.s., and related products   | 198   | 183   | 198   | 1.1  | 2 070                             | 2 084  |
| 66                               | Non-metallic mineral manufactures, n.e.s.  | 191   | 184   | 180   | 1.0  | 2 081                             | 1 994  |
| 67                               | Iron and steel   | 332   | 308   | 332   | 1.8  | 3 133                             | 3 185  |
| 68                               | Non-ferrous metals   | 209   | 124   | 206   | 1.1  | 1 966                             | 2 647  |
| 69                               | Manufactures of metals, n.e.s.   | 413   | 429   | 445   | 2.4  | 4 408                             | 5 332  |
|                                  | <i>Total Manufactured goods classified chiefly by material</i>   | 1 895 | 1 846 | 1 951 | 10.4 | 19 263                            | 21 326 |
| 7                                | Machinery and transport equipment  |       |       |       |      |                                   |        |
| 71                               | Power generating machinery and equipment   | 346   | 470   | 388   | 2.1  | 3 600                             | 4 007  |
| 72                               | Machinery specialized for particular industries  | 823   | 1 942 | 887   | 4.7  | 5 740                             | 9 533  |
| 73                               | Metal working machinery  | 52    | 57    | 66    | 0.4  | 520                               | 601    |
| 74                               | General industrial machinery and equipment, n.e.s. and machine parts, n.e.s.                                   | 866   | 929   | 935   | 5.0  | 8 459                             | 9 452  |
| 75                               | Office machines and automatic data processing machines   | 569   | 787   | 727   | 3.9  | 7 577                             | 7 633  |
| 76                               | Telecommunications and sound recording and reproducing apparatus and equipment                                 | 715   | 825   | 836   | 4.4  | 9 546                             | 9 783  |
| 77                               | Electrical machinery, apparatus, appliances, parts (incl. non-elec. counterparts of electrical domestic equip) | 804   | 924   | 915   | 4.9  | 9 531                             | 8 991  |
| 78                               | Road vehicles (incl. air-cushion vehicles)   | 2 317 | 2 510 | 2 526 | 13.4 | 20 481                            | 23 013 |
| 79                               | Transport equipment (excl. road vehicles)  | 267   | 175   | 223   | 1.2  | 1 902                             | 3 034  |
|                                  | <i>Total Machinery and transport equipment</i>   | 6 759 | 8 617 | 7 503 | 39.9 | 67 356                            | 76 047 |

— nil or rounded to zero (including null cells)

(b) Percent of total merchandise is calculated for the most recent month.

(a) Some SITC sections and divisions exclude commodities subject to a confidentiality restriction. These are included in Division 98. For more information see paragraph 26 of the Explanatory Notes.

|   |  |               |               |  | 10 MONTHS<br>ENDED APRIL |                |
|---|--|---------------|---------------|--|--------------------------|----------------|
|   |  |               |               |  | 2011                     | 2012           |
|   |  |               |               |  | .....                    |                |
|   | Feb<br>2012  | Mar<br>2012   | Apr<br>2012   | Percent<br>of total<br>merchandise<br>imports(b) |                          |                |
|   | \$m  | \$m           | \$m           | %  | \$m                      | \$m            |
| SECTION AND DIVISION OF THE SITC                      |  |               |               |  |                          |                |
| 8   | Miscellaneous manufactured articles  |               |               |  |                          |                |
| 81  | Prefabricated buildings; sanitary, plumbing, heating and lighting fixtures and fittings, n.e.s.                |               |               |  |                          |                |
|   | 88   | 118           | 102           | 0.5  | 785                      | 1 080          |
| 82  | Furniture, parts thereof; bedding, mattresses, mattress supports, cushions and similar stuffed furnishings     |               |               |  |                          |                |
|   | 171  | 200           | 215           | 1.1  | 2 246                    | 2 427          |
| 83  | Travel goods, handbags and similar containers  |               |               |  |                          |                |
|   | 51   | 54            | 62            | 0.3  | 682                      | 724            |
| 84  | Articles of apparel and clothing accessories   |               |               |  |                          |                |
|   | 477  | 464           | 469           | 2.5  | 4 752                    | 4 891          |
| 85  | Footwear   |               |               |  |                          |                |
|   | 114  | 113           | 98            | 0.5  | 1 169                    | 1 199          |
| 87  | Professional, scientific and controlling instruments and apparatus, n.e.s.                                     |               |               |  |                          |                |
|   | 400  | 482           | 425           | 2.3  | 3 997                    | 4 147          |
| 88  | Photographic apparatus, equipment and supplies and optical goods, n.e.s., watches and clocks                   |               |               |  |                          |                |
|   | 105  | 104           | 99            | 0.5  | 1 167                    | 1 172          |
| 89  | Miscellaneous manufactured articles, n.e.s.  |               |               |  |                          |                |
|   | 690  | 707           | 670           | 3.6  | 8 452                    | 8 496          |
|   | <i>Total Miscellaneous manufactured articles</i>   | <i>2 097</i>  | <i>2 241</i>  | <i>11.4</i>                                      | <i>23 250</i>            | <i>24 137</i>  |
| 9   | Commodities and transactions not classified elsewhere in the SITC  |               |               |  |                          |                |
| 93  | Special transactions and commodities not classified according to kind  |               |               |  |                          |                |
|   | 3  | 3             | 3             | —  | 30                       | 38             |
| 95  | Gold coin whether or not legal tender, and other coin being legal tender                                       |               |               |  |                          |                |
|   | 1  | 6             | 3             | —  | 11                       | 25             |
| 96  | Coin (excl. gold coin) not being legal tender  |               |               |  |                          |                |
|   | —  | 1             | —             | —  | 3                        | 5              |
| 97  | Gold, non-monetary (excl. gold ores and concentrates)  |               |               |  |                          |                |
|   | 536  | 446           | 403           | 2.1  | 4 542                    | 5 835          |
| 98  | Combined confidential items excl. some of SITC 280 (exports only) and some of SITCs 510 and 520 (imports only) |               |               |  |                          |                |
|   | 453  | 402           | 466           | 2.5  | 5 160                    | 5 398          |
|   | <i>Total Commodities and transactions not classified elsewhere in the SITC</i>                                 | <i>993</i>    | <i>858</i>    | <i>4.7</i>                                       | <i>9 747</i>             | <i>11 301</i>  |
| <b>Total merchandise imports</b>                      | <b>17 904</b>  | <b>20 793</b> | <b>18 814</b> | <b>100.0</b>                                     | <b>177 698</b>           | <b>199 075</b> |
| Balance of Payments Adjustments                       | 1 107  | 110           | 1 038         | . .  | 4 192                    | 8 776          |
| Goods Debits (imports) on a Balance of Payments Basis | 19 011   | 20 903        | 19 852        | . .  | 181 890                  | 207 851        |

. . not applicable

— nil or rounded to zero (including null cells)

(a) Some SITC sections and divisions exclude commodities subject to a confidentiality restriction. These are included in Division 98. For more information see paragraph 26 of the Explanatory Notes.

(b) Percent of total merchandise is calculated for the most recent month.



## INTERNATIONAL MERCHANDISE TRADE(a), By country and country groups

|                           | EXPORTS        |               |  |  | IMPORTS (b)    |               |  |  | BALANCE OF<br>MERCHANDISE<br>TRADE |  |
|---------------------------|----------------|---------------|--|--|----------------|---------------|--|--|------------------------------------|--|
|                           | 2010-11        | Apr<br>2012   | 10<br>months<br>ended<br>April<br>2011 | 10<br>months<br>ended<br>April<br>2012 | 2010-11        | Apr<br>2012   | 10<br>months<br>ended<br>April<br>2011 | 10<br>months<br>ended<br>April<br>2012 | 2010-11                            | 10<br>months<br>ended<br>April<br>2012 |
|                           | \$m            | \$m           | \$m                                    | \$m                                    | \$m            | \$m           | \$m                                    | \$m                                    |                                    |  |
| Belgium                   | 1 324          | 210           | 1 017                                  | 1 410                                  | 1 645          | 147           | 1 363                                  | 1 418                                  | -321                               | -7                                     |
| Brazil                    | 1 519          | 101           | 1 251                                  | 1 104                                  | 882            | 53            | 718                                    | 608                                    | 637                                | 496                                    |
| Canada                    | 1 345          | 170           | 1 088                                  | 1 257                                  | 1 762          | 160           | 1 462                                  | 1 633                                  | -417                               | -376                                   |
| China                     | 64 856         | 6 518         | 52 693                                 | 62 440                                 | 41 109         | 3 250         | 34 404                                 | 36 095                                 | 23 747                             | 26 345                                 |
| Denmark                   | 237            | 12            | 125                                    | 151                                    | 941            | 66            | 798                                    | 936                                    | -703                               | -785                                   |
| Egypt(c)                  | 593            | 65            | 522                                    | 419                                    | 39             | 2             | 20                                     | 33                                     | 554                                | 386                                    |
| Fiji                      | 300            | 23            | 252                                    | 254                                    | 187            | 10            | 160                                    | 159                                    | 113                                | 95                                     |
| Finland                   | 226            | 43            | 175                                    | 248                                    | 862            | 76            | 671                                    | 825                                    | -637                               | -578                                   |
| France                    | 1 123          | 138           | 876                                    | 893                                    | 3 798          | 329           | 3 175                                  | 3 181                                  | -2 675                             | -2 288                                 |
| Germany                   | 2 115          | 162           | 1 745                                  | 1 791                                  | 10 247         | 962           | 8 509                                  | 9 177                                  | -8 132                             | -7 386                                 |
| Hong Kong (SAR of China)  | 3 257          | 225           | 2 769                                  | 2 434                                  | 1 153          | 86            | 981                                    | 960                                    | 2 105                              | 1 473                                  |
| India                     | 15 761         | 901           | 12 610                                 | 11 167                                 | 2 083          | 204           | 1 755                                  | 2 093                                  | 13 678                             | 9 074                                  |
| Indonesia                 | 4 780          | 413           | 3 792                                  | 4 417                                  | 5 751          | 423           | 4 674                                  | 4 946                                  | -971                               | -529                                   |
| Iran                      | 157            | 30            | 140                                    | 185                                    | 121            | 3             | 118                                    | 57                                     | 36                                 | 128                                    |
| Iraq                      | 327            | 23            | 268                                    | 154                                    | —              | —             | —                                      | —                                      | 327                                | 154                                    |
| Ireland                   | 123            | 8             | 105                                    | 71                                     | 2 177          | 88            | 1 814                                  | 1 685                                  | -2 054                             | -1 614                                 |
| Israel                    | 227            | 28            | 184                                    | 205                                    | 608            | 41            | 507                                    | 541                                    | -380                               | -337                                   |
| Italy                     | 1 274          | 64            | 1 018                                  | 965                                    | 4 845          | 403           | 4 026                                  | 4 356                                  | -3 571                             | -3 391                                 |
| Japan                     | 46 967         | 4 191         | 38 627                                 | 42 953                                 | 16 693         | 1 557         | 14 059                                 | 16 947                                 | 30 274                             | 26 007                                 |
| Korea, Republic of        | 22 556         | 1 450         | 18 737                                 | 18 644                                 | 6 985          | 741           | 5 701                                  | 7 542                                  | 15 571                             | 11 102                                 |
| Kuwait                    | 617            | 46            | 482                                    | 436                                    | 317            | —             | 254                                    | 395                                    | 301                                | 41                                     |
| Malaysia                  | 4 059          | 436           | 3 244                                  | 3 987                                  | 8 814          | 809           | 7 337                                  | 7 556                                  | -4 756                             | -3 569                                 |
| Mexico                    | 888            | 101           | 674                                    | 943                                    | 1 592          | 208           | 1 308                                  | 1 593                                  | -705                               | -650                                   |
| Netherlands               | 3 024          | 301           | 2 407                                  | 3 109                                  | 1 385          | 158           | 1 160                                  | 1 468                                  | 1 640                              | 1 641                                  |
| New Zealand               | 7 691          | 574           | 6 434                                  | 6 375                                  | 7 364          | 564           | 6 048                                  | 6 244                                  | 327                                | 131                                    |
| Pakistan                  | 381            | 64            | 284                                    | 386                                    | 175            | 16            | 146                                    | 150                                    | 207                                | 236                                    |
| Papua New Guinea          | 2 213          | 175           | 1 799                                  | 2 051                                  | 3 474          | 233           | 2 801                                  | 2 856                                  | -1 260                             | -805                                   |
| Philippines               | 1 484          | 86            | 1 283                                  | 1 324                                  | 442            | 37            | 377                                    | 372                                    | 1 042                              | 952                                    |
| Saudi Arabia              | 1 502          | 137           | 1 220                                  | 1 360                                  | 369            | 18            | 302                                    | 373                                    | 1 132                              | 987                                    |
| Singapore                 | 5 464          | 734           | 4 695                                  | 5 570                                  | 11 408         | 1 117         | 9 444                                  | 12 642                                 | -5 944                             | -7 072                                 |
| South Africa              | 1 614          | 171           | 1 370                                  | 1 467                                  | 1 006          | 66            | 864                                    | 669                                    | 608                                | 798                                    |
| Spain                     | 857            | 66            | 722                                    | 730                                    | 1 702          | 205           | 1 388                                  | 1 725                                  | -845                               | -996                                   |
| Sweden                    | 496            | 22            | 355                                    | 264                                    | 2 316          | 184           | 1 900                                  | 2 114                                  | -1 820                             | -1 850                                 |
| Switzerland               | 410            | 69            | 298                                    | 655                                    | 2 515          | 228           | 2 039                                  | 2 584                                  | -2 105                             | -1 929                                 |
| Taiwan                    | 9 109          | 619           | 7 489                                  | 7 222                                  | 3 616          | 340           | 3 035                                  | 3 251                                  | 5 493                              | 3 972                                  |
| Thailand                  | 6 952          | 477           | 5 725                                  | 4 855                                  | 9 118          | 639           | 7 849                                  | 6 982                                  | -2 166                             | -2 127                                 |
| Turkey                    | 427            | 33            | 375                                    | 571                                    | 485            | 38            | 408                                    | 389                                    | -58                                | 182                                    |
| United Arab Emirates      | 2 199          | 179           | 1 842                                  | 1 836                                  | 3 125          | 345           | 2 173                                  | 3 262                                  | -926                               | -1 426                                 |
| United Kingdom            | 6 604          | 627           | 5 121                                  | 6 927                                  | 5 985          | 493           | 4 898                                  | 5 891                                  | 619                                | 1 036                                  |
| United States of America  | 9 055          | 838           | 7 492                                  | 8 198                                  | 23 226         | 2 236         | 19 119                                 | 22 616                                 | -14 171                            | -14 418                                |
| Viet Nam                  | 1 801          | 159           | 1 467                                  | 1 691                                  | 2 668          | 181           | 2 175                                  | 2 320                                  | -866                               | -629                                   |
| Other Countries(b)        | 9 800          | 850           | 8 089                                  | 8 579                                  | 21 086         | 2 094         | 17 752                                 | 20 426                                 | -11 285                            | -11 846                                |
| <b>Total</b>              | <b>245 724</b> | <b>21 539</b> | <b>200 868</b>                         | <b>219 700</b>                         | <b>214 080</b> | <b>18 814</b> | <b>177 698</b>                         | <b>199 075</b>                         | <b>31 644</b>                      | <b>20 624</b>                          |
| APEC                      | 193 931        | 17 325        | 159 171                                | 175 712                                | 148 529        | 12 988        | 123 413                                | 138 093                                | 45 403                             | 37 620                                 |
| ASEAN                     | 24 706         | 2 320         | 20 349                                 | 21 989                                 | 39 392         | 3 337         | 32 823                                 | 35 950                                 | -14 686                            | -13 961                                |
| Developing Countries      | 155 332        | 13 384        | 127 066                                | 136 989                                | 110 214        | 9 638         | 91 393                                 | 101 963                                | 45 119                             | 35 025                                 |
| Least Developed Countries | 2 284          | 161           | 1 931                                  | 1 809                                  | 378            | 51            | 308                                    | 497                                    | 1 906                              | 1 311                                  |
| European Union(d)         | 17 862         | 1 691         | 14 064                                 | 16 930                                 | 38 514         | 3 365         | 31 870                                 | 35 194                                 | -20 652                            | -18 263                                |
| OECD                      | 107 747        | 9 195         | 88 204                                 | 97 261                                 | 101 727        | 9 294         | 84 255                                 | 96 811                                 | 6 020                              | 450                                    |

— nil or rounded to zero (including null cells)

(a) See Time series spreadsheets for details of all countries.

(b) From September 2008 imports data with confidentiality restrictions 'no commodity details' or 'no value details' are included in Other countries.

(c) Exports of Alumina to Egypt are excluded from country total and included in the 'Other Countries' category.

(d) The European Union includes 27 member countries for all periods.

|  | 10 MONTHS<br>ENDED APRIL |               |                |                |
|--|--------------------------|---------------|----------------|----------------|
|  | 2010-11                  | Apr<br>2012   | 2011           | 2012           |
|  | \$m                      | \$m           | \$m            | \$m            |
| EXPORTS (a)                            |                          |               |                |                |
| New South Wales                        | 36 368                   | 3 483         | 29 730         | 33 690         |
| Victoria                               | 19 646                   | 1 765         | 16 071         | 17 636         |
| Queensland                             | 49 353                   | 3 703         | 40 166         | 44 628         |
| South Australia                        | 11 194                   | 1 003         | 9 048          | 9 511          |
| Western Australia                      | 112 172                  | 10 234        | 91 831         | 100 047        |
| Tasmania                               | 3 185                    | 227           | 2 611          | 2 640          |
| Northern Territory                     | 5 296                    | 482           | 4 500          | 4 481          |
| Australian Capital Territory           | 3                        | 2             | 3              | 5              |
| State not available for publication(b) | 446                      | —             | 328            | 446            |
| Re-exports                             | 8 061                    | 641           | 6 579          | 6 616          |
| <b>Total</b>                           | <b>245 724</b>           | <b>21 539</b> | <b>200 868</b> | <b>219 700</b> |
| IMPORTS                                |                          |               |                |                |
| New South Wales                        | 81 484                   | 6 750         | 67 796         | 71 613         |
| Victoria                               | 56 806                   | 4 722         | 47 238         | 49 490         |
| Queensland                             | 33 084                   | 3 115         | 27 022         | 32 628         |
| South Australia                        | 6 529                    | 657           | 5 326          | 6 045          |
| Western Australia                      | 25 954                   | 2 702         | 21 460         | 29 383         |
| Tasmania                               | 637                      | 48            | 536            | 831            |
| Northern Territory                     | 3 689                    | 355           | 3 154          | 3 675          |
| Australian Capital Territory           | 8                        | —             | 5              | 12             |
| State not available for publication(c) | 5 888                    | 466           | 5 160          | 5 398          |
| <b>Total</b>                           | <b>214 080</b>           | <b>18 814</b> | <b>177 698</b> | <b>199 075</b> |

— nil or rounded to zero (including null cells)

(a) State in which the final stage of production or manufacture occurs.

(b) Exports of Alumina to Bahrain, Egypt and Iceland are excluded from the state totals and included in 'State not available for publication'.

(c) From September 2008 imports data with confidentiality restrictions 'no commodity details' or 'no value details' are included in State not available for publication.

## PERIOD AVERAGE EXCHANGE RATES(a), Per Australian dollar

| <i>Period</i>  | <i>United States dollar</i> | <i>UK pound sterling</i> | <i>Euro</i> | <i>Japanese yen</i> | <i>Special Drawing Right</i> | <i>Trade-weighted index of value of the A\$(b)</i> |
|----------------|-----------------------------|--------------------------|-------------|---------------------|------------------------------|--|
| FINANCIAL YEAR |                             |                          |             |                     |                              |  |
| <b>2008-09</b> | 0.7456                      | 0.4621                   | 0.5414      | 73.99               | 0.4869                       | 60.2   |
| <b>2009-10</b> | 0.8830                      | 0.5590                   | 0.6362      | 80.77               | 0.5710                       | 68.9   |
| <b>2010-11</b> | 0.9891                      | 0.6213                   | 0.7248      | 82.10               | 0.6346                       | 74.0   |
| MONTHS         |                             |                          |             |                     |                              |  |
| <b>2011</b>    |                             |                          |             |                     |                              |  |
| February       | 1.0086                      | 0.6252                   | 0.7383      | 83.29               | 0.6457                       | 75.1   |
| March          | 1.0100                      | 0.6250                   | 0.7217      | 82.60               | 0.6394                       | 74.8   |
| April          | 1.0554                      | 0.6458                   | 0.7311      | 88.09               | 0.6616                       | 77.4   |
| May            | 1.0688                      | 0.6537                   | 0.7448      | 86.75               | 0.6687                       | 77.9   |
| June           | 1.0603                      | 0.6535                   | 0.7368      | 85.35               | 0.6631                       | 77.0   |
| July           | 1.0766                      | 0.6674                   | 0.7532      | 85.52               | 0.6749                       | 77.7   |
| August         | 1.0485                      | 0.6409                   | 0.7312      | 80.83               | 0.6529                       | 75.3   |
| September      | 1.0239                      | 0.6483                   | 0.7434      | 78.61               | 0.6487                       | 74.7   |
| October        | 1.0135                      | 0.6433                   | 0.7387      | 77.76               | 0.6447                       | 74.5   |
| November       | 1.0102                      | 0.6390                   | 0.7446      | 78.32               | 0.6446                       | 74.6   |
| December       | 1.0117                      | 0.6489                   | 0.7676      | 78.74               | 0.6539                       | 75.3   |
| <b>2012</b>    |                             |                          |             |                     |                              |  |
| January        | 1.0388                      | 0.6700                   | 0.8058      | 79.86               | 0.6768                       | 77.0   |
| February       | 1.0726                      | 0.6789                   | 0.8110      | 84.11               | 0.6925                       | 78.6   |
| March          | 1.0543                      | 0.6662                   | 0.7977      | 86.95               | 0.6842                       | 78.1   |
| April          | 1.0350                      | 0.6467                   | 0.7858      | 84.18               | 0.6706                       | 76.6   |

(a) These exchange rates and the trade-weighted index are derived using rates provided by the Reserve Bank of Australia in respect of each trading day.

(b) May 1970 = 100. The Trade-weighted index is reweighted annually on 1 December.

|  | 2008-09 | 2009-10 | 2010-11   | Oct 2011  | Nov 2011  | Dec 2011  | Jan 2012    | Feb 2012    | Mar 2012    |
|--|---------|---------|-----------|-----------|-----------|-----------|-------------|-------------|-------------|
|  | \$m     | \$m     | \$m       | \$m       | \$m       | \$m       | \$m         | \$m         | \$m         |
| <b>BALANCE</b>                           |         |         |           |           |           |           |             |             |             |
| <b>On goods and services</b>             | —       | —       | <b>76</b> | <b>23</b> | <b>23</b> | <b>24</b> | <b>-340</b> | <b>-340</b> | <b>-343</b> |
| <b>CREDITS</b>                           |         |         |           |           |           |           |             |             |             |
| Total goods and services                 | —       | —       | —         | —         | —         | —         | —           | —           | —           |
| <i>Total goods</i>                       | —       | —       | —         | —         | —         | —         | —           | —           | —           |
| Rural goods                              | —       | —       | —         | —         | —         | —         | —           | —           | —           |
| Non-rural goods                          | —       | —       | —         | —         | —         | —         | —           | —           | —           |
| Net exports of goods under merchanting   | —       | —       | —         | —         | —         | —         | —           | —           | —           |
| Non-monetary gold                        | —       | —       | —         | —         | —         | —         | —           | —           | —           |
| <i>Total services</i>                    | —       | —       | —         | —         | —         | —         | —           | —           | —           |
| <b>DEBITS</b>                            |         |         |           |           |           |           |             |             |             |
| Total goods and services                 | —       | —       | 76        | 23        | 23        | 24        | -340        | -340        | -343        |
| <i>Total goods</i>                       | —       | —       | 76        | 23        | 23        | 24        | -340        | -340        | -343        |
| Consumption goods                        | —       | —       | —         | —         | —         | —         | —           | —           | —           |
| Capital goods                            | —       | —       | 76        | 23        | 23        | 24        | -340        | -340        | -343        |
| Intermediate and other merchandise goods | —       | —       | —         | —         | —         | —         | —           | —           | —           |
| Non-monetary gold                        | —       | —       | —         | —         | —         | —         | —           | —           | —           |
| <i>Total services</i>                    | —       | —       | —         | —         | —         | —         | —           | —           | —           |

— nil or rounded to zero (including null cells)

(a) This table is presented consistent with BPM6 sign conventions. This means for the balance on goods and services a negative revision indicates a decrease in a surplus or an increase in a deficit. For debits a negative revision indicates an increase in debits while a positive revision indicates a decrease in debits.

## EXPLANATORY NOTES

### INTRODUCTION

**1** This publication presents preliminary estimates of Australia's international trade in goods and services on a balance of payments basis (tables 1–11 and 17) and merchandise import and export statistics on a recorded trade basis (tables 12–15). In addition, table 16 Exchange rates and trade-weighted indexes (TWI) are derived by using exchange rates and indexes provided by the Reserve Bank of Australia (RBA). As of December 2011 the RBA has changed the methodology for compiling the TWI to include both merchandise and services trade, rather than merchandise trade only. This takes advantage of country-level services trade data that have been published by the Australian Bureau of Statistics (ABS).

**2** Merchandise trade statistics on a recorded trade basis are compiled from information submitted by exporters and importers or their agents to the Australian Customs and Border Protection Service (Customs and Border Protection). Adjustments for coverage, timing and valuation are made to recorded trade data to convert them to a balance of payments basis. The services data are sourced from the quarterly Survey of International Trade in Services and a range of administrative data and indicator series.

**3** More comprehensive quarterly estimates of Australia's trade in goods and services, together with comprehensive details of Australia's balance of payments are included in the quarterly publication, *Balance of Payments and International Investment Position, Australia* (cat. no. 5302.0). Detailed monthly statistics on merchandise trade are available in Time Series Spreadsheets on the ABS website or by subscription to tailored services. More information on the *International Trade in Services by Country, by State and by Detailed Services Category* are available on a financial year basis (cat. no. 5368.0.55.003) following the September issue of this publication and calendar year basis (cat. no. 5368.0.55.004) following the March issue of this publication.

### CONCEPTS, SOURCES AND METHODS

**4** The conceptual framework used in compiling Australia's merchandise trade statistics can be found in *International Merchandise Trade, Australia: Concepts, Sources and Methods, 2001* (cat. no. 5489.0).

**5** The conceptual framework used in compiling Australia's balance of payments statistics is based on the International Monetary Fund's *Balance of Payments and International Investment Position Manual, Sixth Edition* (BPM6). Descriptions of the underlying concepts and structure of the balance of payments and the sources, methods and terms used in compiling estimates are presented in the publication *Balance of Payments and International Investment Position, Australia: Concepts, Sources and Methods, 1998* (cat. no. 5331.0). This version reflects the international standards prior to BPM6 and is currently being revised. The first part of the revised document was released on 8 March 2011, featuring only the Goods Account. Other components will be released as they become available. Further information on the key changes introduced with BPM6 can be found in the *Information paper: Implementation of new international statistical standards in the ABS National and International Accounts, September 2009* (cat. no. 5310.0.55.002).

**6** To bring merchandise trade statistics on a recorded trade basis to a balance of payments basis, timing adjustments are made to ensure that the transaction is recorded in the period in which ownership changed, rather than in the period in which the transaction was recorded by Customs and Border Protection or the period in which the goods arrived in/departed from an Australian port. Adjustments are also made to account for the change of ownership of goods not included in merchandise trade statistics. Chapter 6 of cat. no. 5331.0 provides more detail on the relationship between statistics on international merchandise trade on a recorded trade basis and on a balance of payments basis.

## EXPLANATORY NOTES *continued*

### CONCEPTS, SOURCES AND METHODS *continued*

**7** Recorded trade exports data presented for recent months in tables 12–15 of this publication are based on information initially reported by exporters to Customs and Border Protection. At the time of initial reporting to Customs and Border Protection the final prices may not be known for some commodities. Therefore, the information recorded for recent months for commodities like iron ore and coal can include a variety of prices including previous or current contract prices and the prevailing spot prices. Newly negotiated contract prices may not be fully reflected in the data first reported to Customs and Border Protection, and to compensate for this, the balance of payments series may reflect adjusted price levels.

**8** The Concepts, Sources and Methods publications and information papers are available to download for free from the ABS website. Select *Statistics*, then select *By Catalogue Number*, and then the catalogue numbers as above.

### CLASSIFICATIONS

**9** The merchandise trade data on a recorded trade basis are presented using the following commodity classifications:

- the Harmonized System 2012 (available on request)
- the Standard International Trade Classification (SITC Revision 4)
- the Classification by Broad Economic Categories (BEC)
- the industry classification: Australian and New Zealand Standard Industrial Classification, 2006 (ANZSIC 06) from July 2005.

**10** The balance of payments 'goods and services' series are presented according to three classifications with the goods classifications derived from SITC Revision 4 and BEC. The classifications are:

- for goods:
  - the Balance of Payments Commodities for Exports (BoPCE)
  - the Balance of Payments Broad Economic Categories (BoPBEC) for Imports
- for services:
  - the Extended Balance of Payments Services Classification (EBOPS).

### ACCURACY, RELIABILITY AND REVISIONS

**11** While every effort is made to ensure the accuracy and reliability of estimates, most series are subject to revision as more complete and accurate information becomes available. Care should be exercised in the use and interpretation of estimates in this publication. The transactions occurring in international trade in goods and services are of many different kinds, and therefore the compilation of trade estimates entails the use of a very wide range of statistical data of varying degrees of accuracy and timeliness. For further information on the monthly services series, see paragraph 25.

**12** The revisions are applied differently for merchandise trade and balance of payments series. Each month, merchandise trade data are revised for the previous six months to incorporate latest available data.

**13** For the balance of payments 'goods and services' series, in original terms, revisions are not usually applied in the July, October, January or April issues. This is to ensure the monthly series align with the comparable series in the *Balance of Payments and International Investment Position, Australia* (cat. no. 5302.0). In the September issue revisions can be applied to the four previous financial years. In other issues revisions can be applied to the previous and current financial years to incorporate the latest available survey and administrative data.

**14** In seasonally adjusted and trend terms, revisions may occur at any time point but tend to focus on the most recent estimates. Please also refer to paragraphs 17 (seasonal adjustment) and 19 (trend estimates) below.

## EXPLANATORY NOTES *continued*

### SIGN CONVENTION

**15** In keeping with BPM6 conventions, balance of payments basis credit entries are shown with an implied positive sign and debit items are shown as negative entries. For statistics on a recorded trade basis, both imports and exports are shown without sign. The calculation of percentage changes on balance of payments debit items are made without regard to sign. References to balance of payments debit items in Key Figures, Key Points, and Analysis and Comments are also made without regard to sign.

### SEASONALLY ADJUSTED AND TREND ESTIMATES

**16** The estimates of international trade in goods and services on a balance of payments basis are seasonally adjusted, however the merchandise exports and imports statistics on a recorded trade basis are not. Monthly original estimates are volatile, being subject to calendar-related and large irregular influences. Seasonally adjusted estimates are derived by estimating and removing from the original series systematic calendar related effects, such as seasonal (e.g. Christmas), trading day and moving holiday (e.g. Easter) influences. Seasonal adjustment does not aim to remove the irregular or non-seasonal influences which may be present in any particular month. These irregular influences may reflect both random economic events and difficulties of statistical recording.

**17** The seasonally adjusted statistics in this publication use the concurrent seasonal adjustment technique and Autoregressive Integrated Moving Average (ARIMA) modelling to estimate factors for the current and previous months. Under concurrent seasonal adjustment, the estimates of seasonal factors are fine tuned as new or revised original estimates become available each period. The seasonally adjusted estimates are subject to revisions at each reference month as the estimates of seasonal factors are improved.

**18** ARIMA modelling relies on the characteristics of the series being analysed to project future period data. ARIMA modelling is used on a case-by-case basis where it results in reduced revisions to seasonally adjusted series when subsequent data becomes available. The projected values are temporary, intermediate values, that are only used internally to improve the estimation of the seasonal factors. The projected data do not affect the original estimates and are discarded at the end of the seasonal adjustment process. The ARIMA model is assessed as part of the annual review and, following the 2011 annual review, the majority of directly seasonally adjusted trade in goods and services time series use an ARIMA model.

**19** The month-to-month movements of the seasonally adjusted estimates may not be reliable indicators of underlying behaviour because they include irregular or non-seasonal movements. Trend estimates reduce the effect of these movements as they are derived by applying a 13-term Henderson moving average to the seasonally adjusted series. The 13-term Henderson moving average (like all Henderson averages) is symmetric, but as the end of a time series is approached, asymmetric forms of the average are applied. While the asymmetric weights enable trend estimates for recent months to be produced, it does result in revisions to the estimates for the most recent six months as additional observations become available. Revisions to trend estimates can also occur because of revisions to the original data and as a result of the re-estimation of the seasonal factors. Trend estimates should be used with caution, especially around the time of unusual influences, until these have been appropriately taken into account.

**20** Information papers and articles on time series methods are available on the ABS website:

- for seasonal adjustment methods, see *Information Paper: An Introductory Course on Time Series Analysis, Jan 2005* (cat. no. 1346.0.55.001) and *Time Series Analysis Frequently Asked Questions, 2003* (cat. no. 1346.0.55.002)
- for ARIMA modelling, see *Feature article: Use of ARIMA modelling to reduce revisions* in the October 2004 issue of *Australian Economic Indicators* (cat. no. 1350.0)

## EXPLANATORY NOTES *continued*

### SEASONALLY ADJUSTED AND TREND ESTIMATES *continued*

- for trend estimates methods, see *Information Paper: A Guide to Interpreting Time Series – Monitoring Trends* (cat. no. 1349.0)
- alternatively contact the Assistant Director, Time Series Analysis on (02) 6252 6345 or e-mail: [time.series.analysis@abs.gov.au](mailto:time.series.analysis@abs.gov.au).

### ECONOMIC TERRITORY

**21** In accordance with BPM6 definitions, Australia's economic territory, on a balance of payments basis, is the area under the effective control of the Australian government. It includes the land area, airspace, territorial waters, including jurisdiction over fishing rights and rights to fuels and minerals. Australian economic territory also includes territorial enclaves in the rest of the world. These are clearly demarcated areas of land, located in other countries and which are owned or rented by the Australian government for diplomatic, military, scientific or other purposes. Specifically, the economic territory of Australia consists of:

- Geographic Australia which includes Cocos (Keeling) Islands and Christmas Island;
- Norfolk Island;
- Australian Antarctic Territory;
- Heard Island and McDonald Islands;
- Territory of Ashmore Reef and Cartier Island;
- Coral Sea Islands;
- Australia's territorial enclaves overseas; and
- the Joint Petroleum Development Area (joint territory between Australia and East Timor (Timor-Leste)).

**22** Because of administrative complexities and measurement difficulties, Norfolk Island transactions with the rest of the world will not always be captured in all relevant balance of payments statistics. Most of the transactions involving Norfolk Island are not material to Australia's trade performance and not capturing these transactions will not distort these statistics. However, any significant transactions will be identified and included in the relevant statistics.

### COMMODITY BREAKDOWN OF GOODS

**23** For details of the classifications used to present goods exports (credits) and imports (debits) on a balance of payments basis, see tables 6.6 and 6.7, respectively, in *Balance of Payments and International Investment Position, Australia: Concepts, Sources and Methods* (cat. no. 5331.0).

**24** The recorded trade statistics shown in tables 12 and 13 are classified by the Standard International Trade Classification (SITC). Imports and exports of goods at a more detailed level are available from the time series spreadsheets on the ABS website. All data from July 2005 are presented according to SITC Rev 4 and data prior to July 2005 are presented according to SITC Rev 3. For details refer to the 'Classifications and Standards Update' in the July 2008 issue of this publication.

### MONTHLY SERVICES SERIES

**25** Monthly indicators for many of the services components that are only surveyed quarterly are not available. Monthly estimates for the freight and other transportation components of services credits in table 9 are derived by dividing the quarterly estimate by three. Freight debits are derived directly from imports data for the reference month as a difference between total merchandise cost, insurance and freight (CIF) and free on board (FOB), adjusted to reflect timing and processing adjustments. For freight credits and other transportation credits and debits, estimates are derived by extrapolating the last quarter's data by an average of movements for the same quarter over the three previous years, and then dividing the estimate by three. Similarly other services estimates are derived by extrapolating the last quarter's data by an average of movements for the same quarter over the previous three years, and then dividing the estimate by three.



## EXPLANATORY NOTES *continued*

### CONFIDENTIALITY OF MERCHANDISE TRADE STATISTICS

**26** The release of statistics for certain merchandise trade commodities is restricted in order to prevent the identification of the activities of an individual business, where this is requested by the business concerned. These restrictions do not affect the total value of exports and imports, but they can affect statistics at the country, state and commodity levels. Imports data that have the confidentiality restrictions 'No commodity details' or 'No value details' are aggregated into a single confidential commodity code. For data prior to September 2008, these data are added back into the appropriate state total and country total (i.e. these totals show the correct level of trade). From September 2008 these confidential data are not added back. Instead the confidential data are published as 'No country details' in the country totals and 'State not available for publication' in the state totals. Therefore, country and state totals from September 2008 may not represent the actual amount of trade in each country/state but only the trade in commodities without a 'No commodity details' or 'No value details' restriction. For information on the confidentiality restrictions applied to the merchandise trade statistics in this publication, refer to the current issue of *International Merchandise Trade: Confidential Commodities List (CCL)* (cat. no. 5372.0.55.001).

### TOURISM RELATED SERVICES

**27** The tourism related services memorandum items provide timely indicators of the movements in tourism related activities, not an absolute measure of the level of these activities. The tourism related indicator has been derived by combining total travel services (business, education-related and other personal travel) and passenger transportation services (which includes agency fees and commissions for air transport).

### SERVICES BY STATE AND BY PARTNER COUNTRY

**28** Annual services data by state, by country and detailed services are released twice yearly. Calendar year data are usually released following the March issue of this publication and financial year data are usually released following the September issue. Refer to time series data under trade in services data cubes for details.

**29** Services credits are classified by the state of provision, while services debits are classified by the state of consumption. The state allocations for transportation, travel, postal and courier, and telecommunication services are based on a number of indicators including merchandise trade statistics by state, overseas passenger arrivals and departures by state of clearance and data provided by the Department of Immigration and Citizenship. The allocation for other services (about 25% of all trade in services) is primarily based on the location of the business reporting the information, which serves as a proxy for the state of provision/consumption of that service. The data should be used with care but are considered suitable for analysis over time.

**30** A comprehensive explanation of the data sources used and the methodology applied in the compilation of partner country statistics is provided in Chapter 17 of *Balance of Payments and International Investment Position, Australia: Concepts, Sources and Methods* (cat. no. 5331.0). Approximately 5% of total services credits and debits for both 2009–10 and 2010–11 were either confidential, or unable to be allocated to individual countries.

### ABS DATA AVAILABLE

**31** More detailed balance of payments and recorded merchandise trade data, including forward seasonal factors are available as time series spreadsheets or data cubes from the ABS website. Merchandise trade data by commodity, country and state that are not on the ABS website may be available on request. Inquiries should be made to the National Information and Referral Service as shown on the back of this publication.

### RELATED PRODUCTS AND PUBLICATIONS

**32** Users may also wish to refer to the following publications which can be downloaded free of charge from the ABS website by using the 'Statistics' tab and selecting the relevant catalogue number:

- *Balance of Payments and International Investment Position, Australia* (cat. no. 5302.0) – issued quarterly

## EXPLANATORY NOTES *continued*

### RELATED PRODUCTS AND PUBLICATIONS *continued*

- *International Merchandise Imports, Australia* (cat. no. 5439.0) – issued monthly
- *International Trade Price Indexes, Australia* (cat. no. 6457.0) – issued quarterly
- *Balance of Payments and International Investment Position, Australia: Concepts, Sources and Methods* (cat. no. 5331.0)
- *Information Paper: Quality of Australian Balance of Payments Statistics* (cat. no. 5342.0)
- *International Merchandise Trade, Australia: Concepts, Sources and Methods* (cat. no. 5489.0)
- *A Guide to Australian Balance of Payments and International Investment Position Statistics* (cat. no. 5362.0.55.001).

**33** Current publications and other products released by the ABS are available from the 'Statistics' tab on the ABS website. The ABS also issues a daily *Release Advice* on the website which details products to be released in the week ahead. A *foreign trade theme page* and a *balance of payments theme page* are available on the ABS website. Select *Topics @ a Glance – Economy – Foreign Trade* or *Balance of Payments*. This page provides direct links to all foreign trade and balance of payments related data and publications, recent changes and forthcoming events, links to relevant websites and a range of other information about the Australian International Accounts.

### ROUNDING

**34** Where figures have been rounded, discrepancies may occur between sums of the component items and totals. Percentage movements are calculated from data at the level of precision presented in this publication (i.e. \$m) except for international merchandise trade tables.

### ABBREVIATIONS

|        |   |
|--------|---|
| \$b    | billion (thousand million) dollars                            |
| \$m    | million dollars   |
| ABS    | Australian Bureau of Statistics                               |
| ANZSIC | Australian and New Zealand Standard Industrial Classification |
| APEC   | Asia Pacific Economic Co-operation                            |
| ASEAN  | Association of South-East Asian Nations                       |
| BEC    | Classification by Broad Economic Categories                   |
| BoPBEC | Balance of Payments Broad Economic Categories                 |
| EMS    | Environmental Management Survey                               |
| f.o.b. | free on board   |
| n.e.s. | not elsewhere specified                                       |
| n.i.e. | not included elsewhere  |
| OECD   | Organisation for Economic Co-operation and Development        |
| SAR    | Special Administrative Region                                 |
| SITC   | Standard International Trade Classification                   |

## APPENDIX RELATED ARTICLES

| Article  | Source (a)    | Issue / Release |
|--|---------------|-----------------|
| <b>Investment</b>  |               |                 |
| Foreign currency exposure  | 5308.0        | Mar qtr 2009    |
| Foreign ownership of equity  | 5302.0        | Sep qtr 2007    |
| Kangaroo bonds   | 1301.0        | 2006            |
| Gross external debt  | 5302.0        | Sep qtr 2003    |
| <b>Balance of payments</b>   |               |                 |
| International comparison of balance of payments statistics   | 5363.0        | 1998–99         |
| <b>Merchandise trade</b>   |               |                 |
| Characteristics of Australian Exporters, 2010–11   | 5368.0.55.006 | May 2012        |
| Export and Import Invoice Currencies, Dec 2009   | 5368.0        | Dec 2009        |
| 100 years of international trade statistics  | 5368.0        | Oct 2007        |
| New methodology for deriving counts of Australian exports  | 5368.0        | Feb 2006        |
| Australia's Importers, 2003–04   | 5368.0        | Nov 2004        |
| Australia's Exporters, 2003–04   | 5368.0        | Oct 2004        |
| Foreign ownership of Australian exporters and importers, 2002–03   | 5496.0.55.001 | Jun 2004        |
| Australia's trade with the USA   | 5368.0        | Mar 2004        |
| Major commodities traded by Australia, 1991 to 2000  | (b) 5422.0    | Dec qtr 2000    |
| <b>Trade in services</b>   |               |                 |
| ABS International Tourism Estimates  | 5302.0        | Dec 2011        |
| Australian outward finance and insurance foreign affiliate trade, 2009–10  | 5485.0        | Jun 2011        |
| International trade in services by partner country, 2006, preliminary  | 5368.0        | Dec 2006        |
| Changes to International trade in services statistics, August 2006   | 5368.0        | Aug 2006        |
| Changes to International trade in services travel statistics   | 5368.0        | Aug 2005        |
| <b>Finance</b>   |               |                 |
| Impact of the farm season on Australian production in 2002–03 and 2003–04  | 1301.0        | 2005            |
| Recent trends in construction and first home buyers finance  | 5609.0        | Mar 2002        |
| Household sector data in the financial accounts  | 5232.0        | Mar qtr 2002    |
| <b>Technical information</b>   |               |                 |
| Changes to AHECC and Customs 2012  | 5368.0.55.017 | Dec 2011        |
| Experimental Statistics on International Shipping Container Movements, 2009–10   | 5368.0.55.018 | Sep 2011        |
| Proposed changes to statistical codes in the HTISC, 2012   | 5368.0.55.016 | May 2011        |
| Proposed changes to statistical codes in the AHECC, 2012   | 5368.0.55.015 | Mar 2011        |
| Implementation of new international statistical standards in ABS National and International Accounts, September 2009                             | 5310.0.55.002 | Oct 2009        |
| Impact of revised international standards on monthly International Trade in Goods and Services, August 2009                                      | 5368.0.55.014 | Oct 2009        |
| Estimation of Workers' Remittances based on Balance of Payments and International Investment Position Manual, Sixth Edition, September 2009      | 5302.0.55.003 | Aug 2009        |
| Revisions to international standards in quarterly Balance of Payments and International Investment Position statistics from September 2009, 2009 | 5302.0.55.002 | Jul 2009        |
| Changes to International Trade in Goods Statistics – Countries and Ports, July 2009  | 5368.0.55.013 | Jul 2009        |
| Revisions to international standards in monthly international trade in goods and services statistics from August 2009, 2009                      | 5368.0.55.012 | Jun 2009        |
| Changes to International Trade in Goods Industry Statistics, July 2009   | 5368.0.55.011 | Dec 2008        |
| Technical note 1 – Income on debt  | 5302.0        | Jun qtr 2008    |
| Technical note 2 – Use of CDI data   | 5302.0        | Jun qtr 2008    |
| Impact of introducing Revision 4 of the Standard International Trade Classification, 2008  | 5368.0.55.010 | May 2008        |
| Changes to international trade statistics July 2008, 2007 to 2008  | 5368.0.55.009 | Jan 2008        |
| Introduction of revised international standards in ABS economic statistics in 2009, 2007   | 5310.0.55.001 | Sep 2007        |
| Changes on 1 January 2007 to Statistical Codes in the AHECC and the Customs Tariff, 2007   | 1233.0.55.001 | Nov 2006        |
| ABS implementation in January 2007 of revisions to international trade classifications, 2007   | 5368.0.55.005 | Jun 2006        |
| Revised treatment of Goods for Processing in Merchandise Trade and Balance of Payments Statistics  | 5368.0        | May 2006        |
| Impact of Customs and ABS changes on import statistics from October 2005   | 5439.0        | Oct 2005        |
| ABS management of the impact of the implementation of the imports component of the New Customs System  | 5439.0        | Aug 2005        |
| Changes to country and port classifications  | 5368.0        | May 2003        |
| Implementation of New Customs Systems  | 5368.0        | Aug 2004        |
| The effect of customs changes on export statistics   | 5422.0        | Jun qtr 2002    |
| Data confidentiality   | 5422.0        | Dec qtr 1999    |

- (a) In the ABS website home page, select Statistics; By Catalogue Number; and click on the specified catalogue number and issue. Note: in some instances, a particular issue of the publication can be found in the Past & Future Releases page of the catalogue.
- (b) This article can be found in pdf format by referring to the Downloads page of the specified issue of this publication on the ABS website.

## FOR MORE INFORMATION . . .

### INTERNET

**www.abs.gov.au** the ABS website is the best place for data from our publications and information about the ABS.

## INFORMATION AND REFERRAL SERVICE

Our consultants can help you access the full range of information published by the ABS that is available free of charge from our website. Information tailored to your needs can also be requested as a 'user pays' service. Specialists are on hand to help you with analytical or methodological advice.

### PHONE

1300 135 070

### EMAIL

client.services@abs.gov.au

### FAX

1300 135 211

### POST

Client Services, ABS, GPO Box 796, Sydney NSW 2001

## FREE ACCESS TO STATISTICS

All statistics on the ABS website can be downloaded free of charge.

### WEB ADDRESS

**www.abs.gov.au**